



## Mora Road, NW2

£450,000

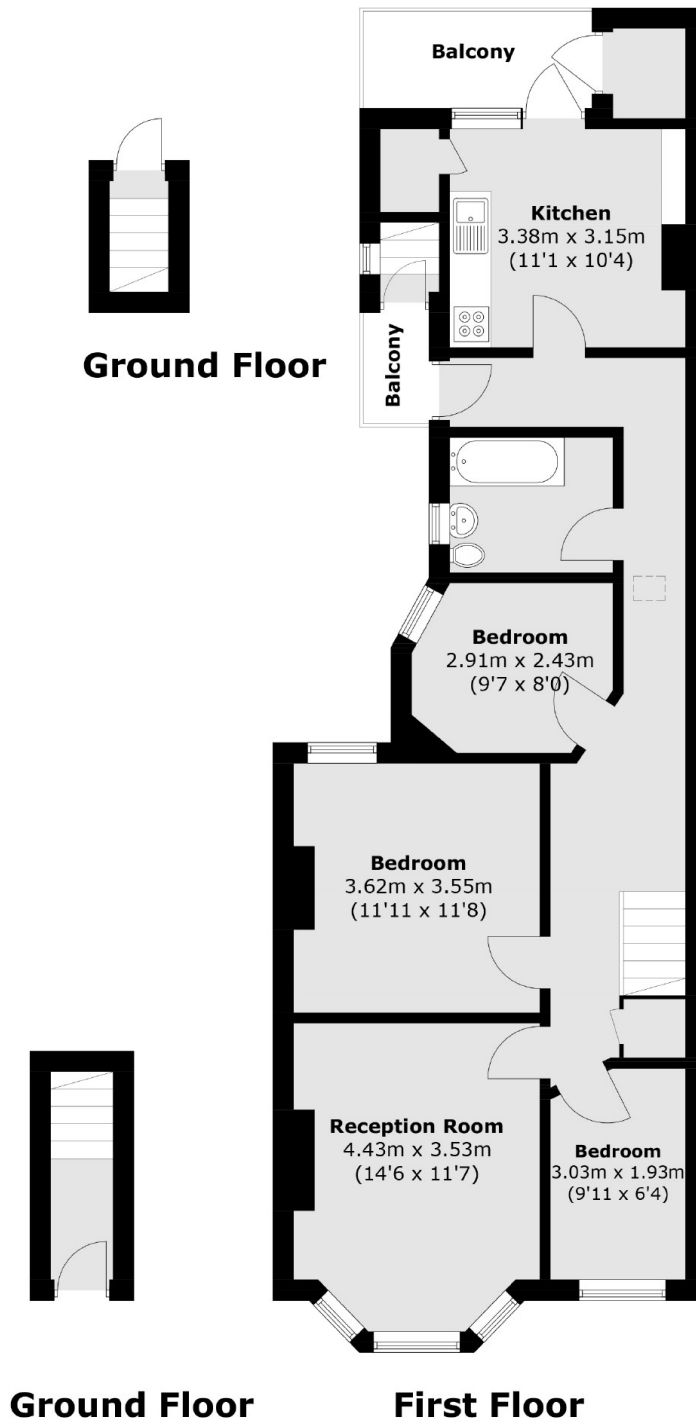
This first floor maisonette offers generous internal living space and benefits from three bedrooms, a large reception with a bay window, a separate eat-in kitchen with access to a balcony that overlooks a private garden, which has direct access, and a family bathroom.

Mora Road is a quiet residential street in the heart of Cricklewood, close to Cricklewood Station (Thameslink Railway) and 24 hour bus services. An array of local delis, restaurants, and cafés can be found on the Broadway, and the green open spaces of Gladstone Park are 0.3 miles away.

### Features

- Three Bedrooms
- First Floor Flat
- Private Garden
- Two Balconies
- Leasehold
- Gladstone Park Gardens

# Mora Road, London, NW2



Total area (approx.): 84.6 sq. m (910.5 sq. ft)  
Balcony area : 6.1 sq. m (65.6 sq. ft)

## Dexters

Cricklewood  
28-30 Cricklewood Broadway  
London  
NW2 3HD  
Sales  
020 7794 7710

Energy Rating: D. We aim to make our particulars both accurate and reliable. However they are not guaranteed; nor do they form part of an offer or contract. If you require clarification on any points then please contact us, especially if you're traveling some distance to view. Please note that appliances and heating systems have not been tested and therefore no warranties can be given as to their good working order.

 **RICS** | Regulated  
Estate Agent  
and Letting Agent

dexters.co.uk