



## Park Avenue North, NW10

### £1,750,000

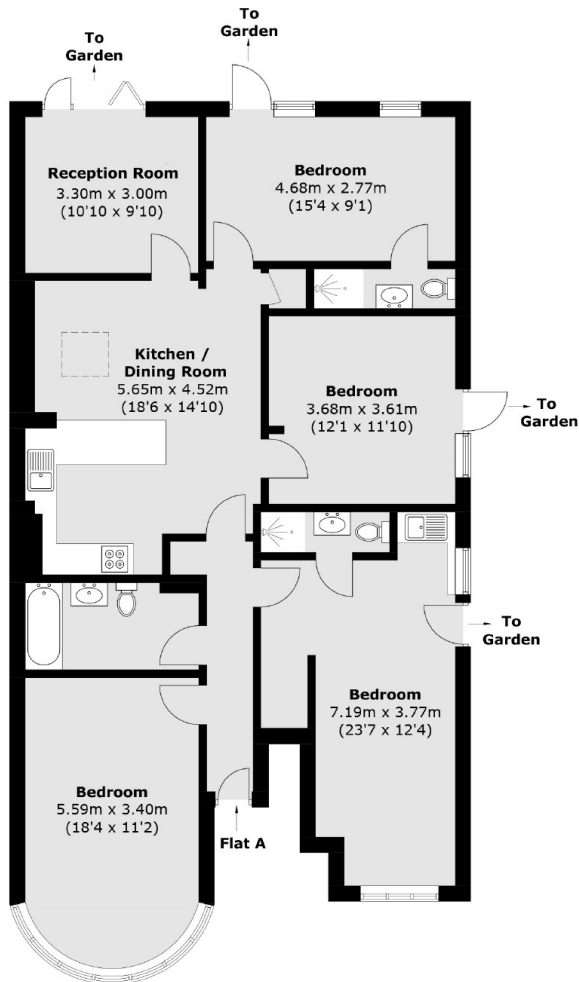
A great investment opportunity comprising three units in great condition, with a 3/4 bed ground floor apartment, a two bedroom first floor apartment and a one bedroom top floor apartment. Generating close to £95,000 per annum.

Park Avenue North is well located and moments away from Gladstone Park and the excellent selection of amenities in nearby Willesden. You also have good transport links with Willesden Green and Dollis Hill stations nearby for easy access into central London.

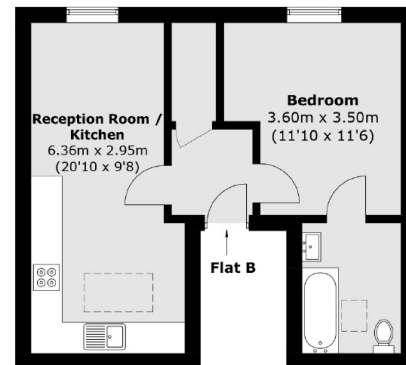
### Features

- Investment Opportunity
- Three Apartments
- Good Condition
- Freehold
- No Onward Chain
- Income Close to £95,000 PA

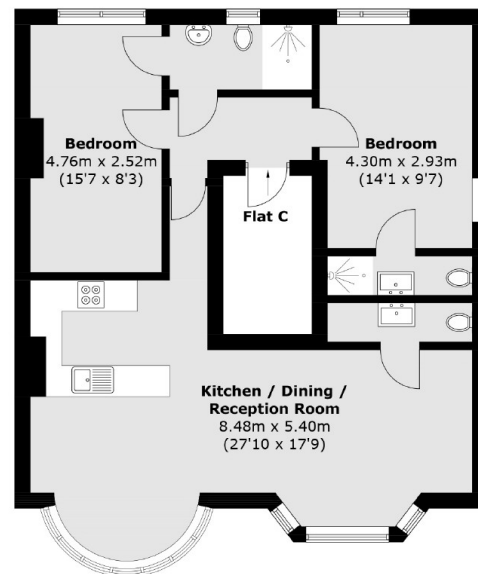
# Park Avenue North, London, NW10



**Ground Floor**



**Second Floor**



**First Floor**

Total area (approx.): 233.6 sq. m (2514.4 sq. ft)  
 Flat A -Total area (approx.): 120.9 sq. m (1,301.3 sq. ft)  
 Flat B -Total area (approx.): 39.8 sq. m (428.4 sq. ft)  
 Flat C -Total area (approx.): 72.9 sq. m (784.7 sq. ft)