



Park Avenue North, NW10

£750,000

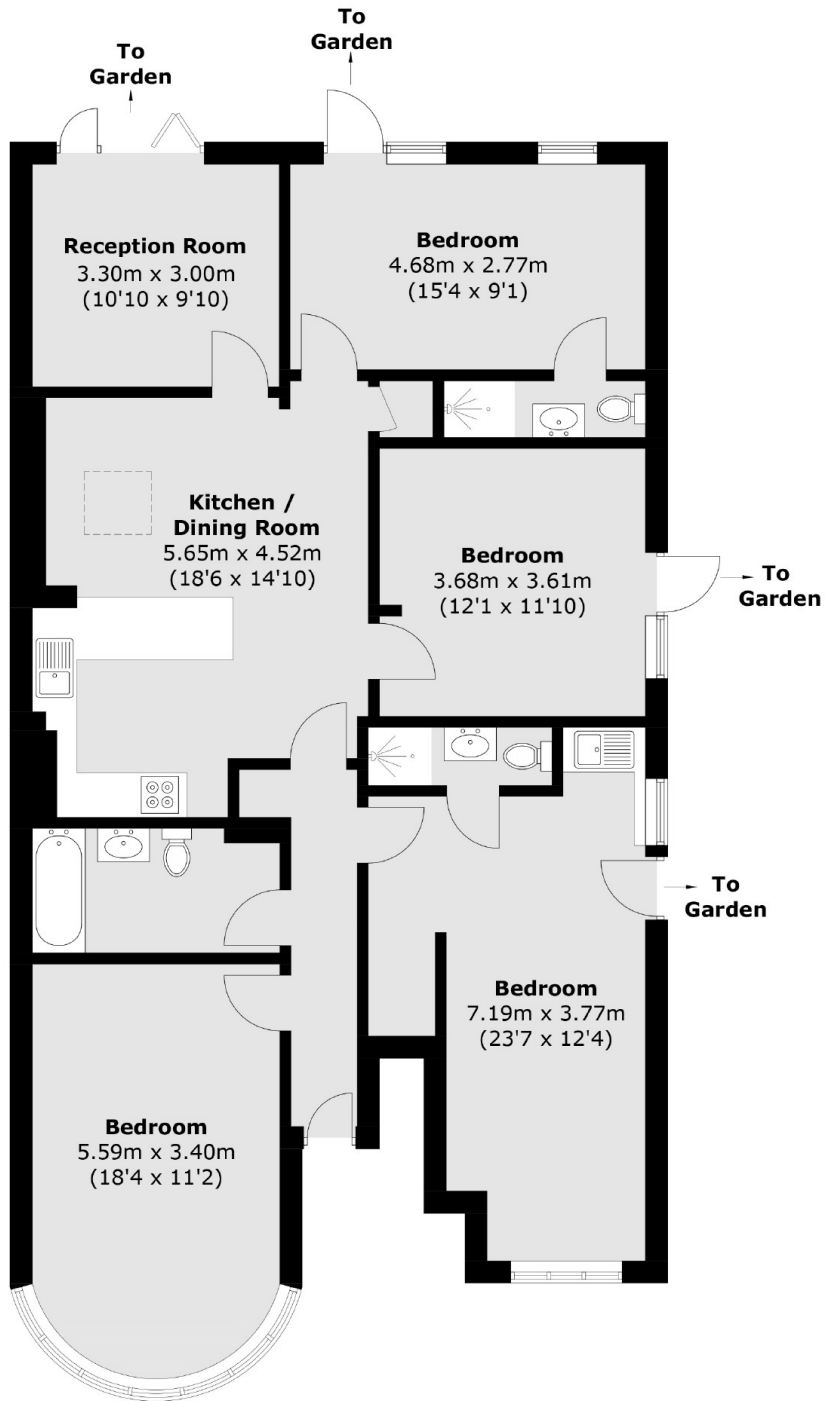
A four bedroom ground floor apartment with an open plan living area, three bathrooms, and access to a private garden. The property comes with off-street parking, a long lease, and no onward chain.

Park Avenue North is well located and moments away from Gladstone Park and the excellent selection of amenities in nearby Willesden. You also have good transport links with Willesden Green and Dollis Hill stations nearby for easy access into central London.

Features

- Ground Floor
- Four Bedrooms
- Open Plan Living Area
- Three Bathrooms
- Private Garden
- Off-Street Parking

Park Avenue North, London, NW10



Total area (approx.): 120.8 sq. m (1,300.3 sq. ft)