



## Prout Grove, NW10

£692 Per week

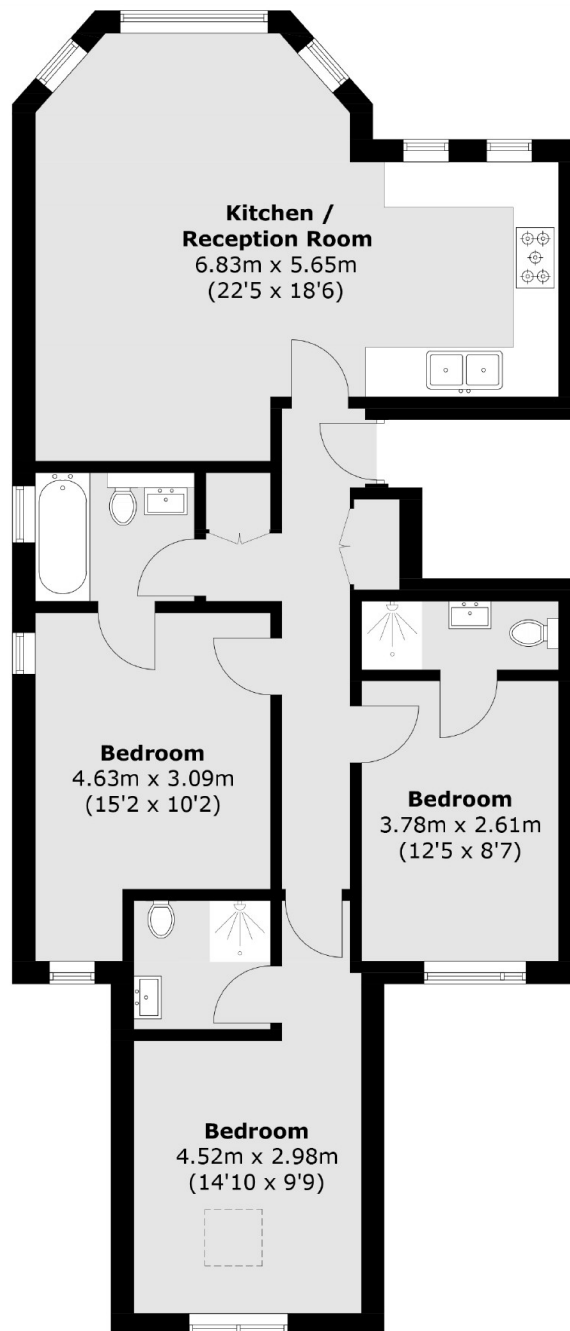
This modern first floor period conversion is ideally situated close to local amenities and transport links. The property has a spacious open plan reception with an integrated kitchen and breakfast bar and three double bedrooms, all with en-suite facilities.

Prout Grove is ideally located for all local amenities found on Willesden High Road with the open spaces of Gladstone Park also nearby. Neasden (Jubilee Line) is the closest station for direct links around the city.

### Features

Three Bedrooms  
Open Plan Reception  
Three Bathrooms  
Modern Interior  
Period Features  
Ideally Situated

# Prout Grove, London, NW10



## First Floor

Total area (approx.): 86.7 sq. m (933.2 sq. ft)