



Park Avenue North, NW10

£550,000

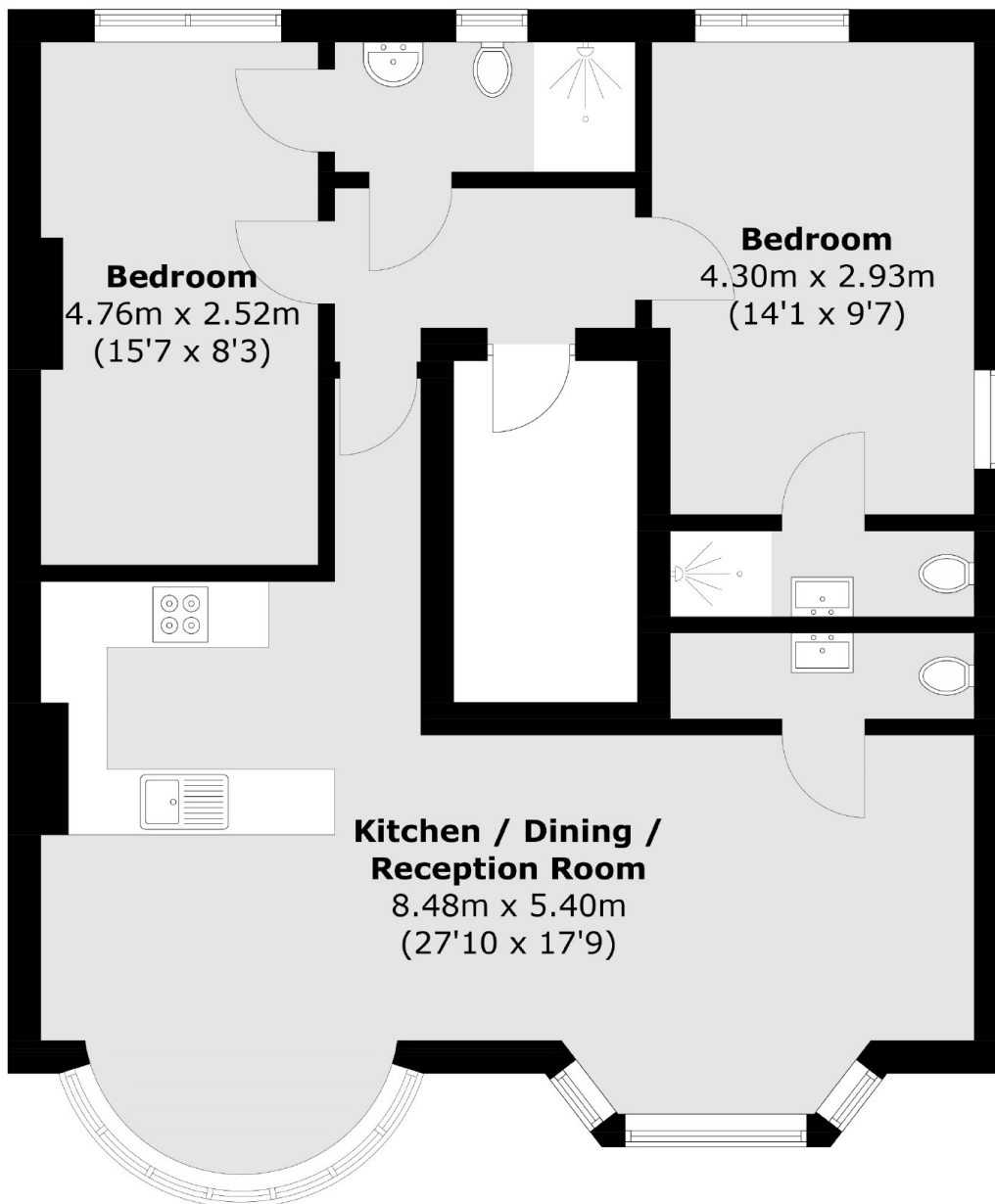
A two double bedroom first floor apartment with an open plan living area and three bathrooms. The property comes with off-street parking, a long lease, and no onwards chain.

Park Avenue North is well located and moments away from Gladstone Park and the excellent selection of amenities in nearby Willesden. You also have good transport links with Willesden Green and Dollis Hill stations nearby for easy access into central London.

Features

- First Floor
- Two Double bedrooms
- Open Plan Living Area
- Three Bathrooms
- No Onward Chain
- Off-Street Parking

Park Avenue North, London, NW10



Total area (approx.): 72.9 sq. m (784.7 sq. ft)