



## Walm Lane, NW2

£1,650 Per week

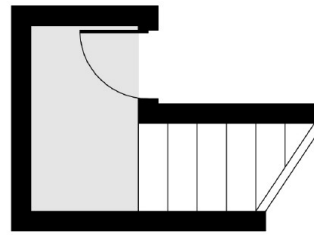
This well presented one bedroom top floor flat is ideally situated in the heart of Willesden Green, close to local amenities and transport links. The property, a charming period conversion, underwent a complete refurbishment in 2023, with a new kitchen and bathroom, an open-plan reception area, and French doors that lead to a private balcony.

Walm Lane is ideally situated in the popular Mapesbury Estate, with Willesden Green and Kilburn stations moments away. Willesden Green and Kilburn High Road have many boutique cafés, restaurants, and local amenities, with Brondesbury Overground on your doorstep.

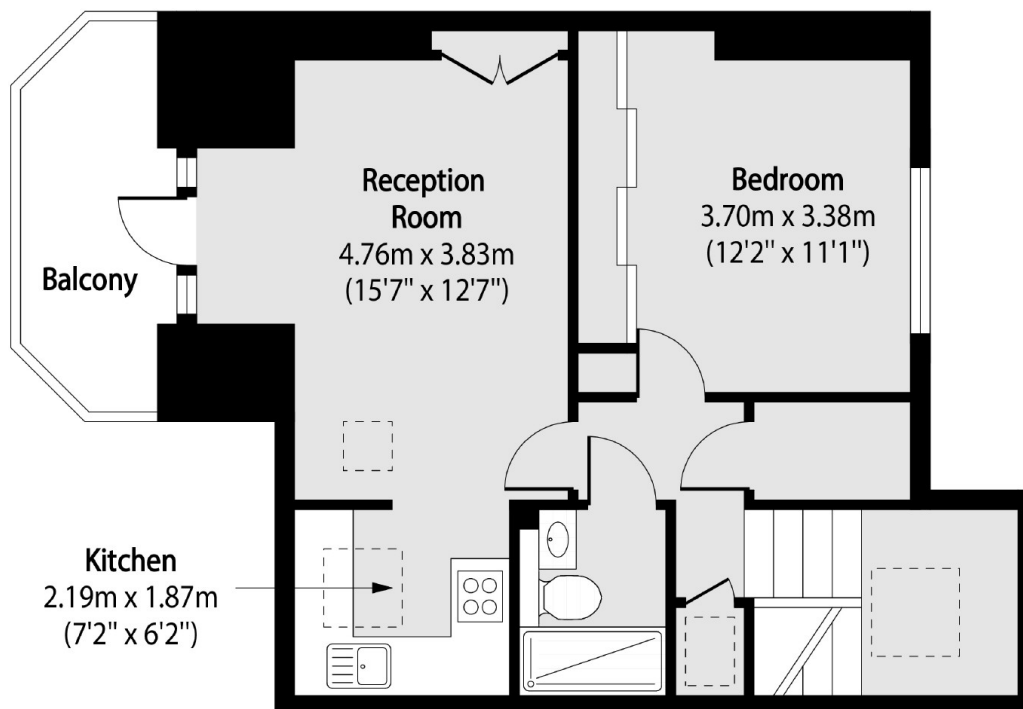
### Features

- Private Balcony
- One Bedroom
- Open Plan
- Modern Kitchen
- Ideally Situated
- Good Storage Space

# Walm Lane, London, NW2



First Floor  
Entrance



Second Floor

Total area (approx): 49.24 sq m (530 sq. ft)

Balcony total area (approx): 5.47 sq m (59 sq. ft)