



Cotswold Gardens, NW2

£525,000

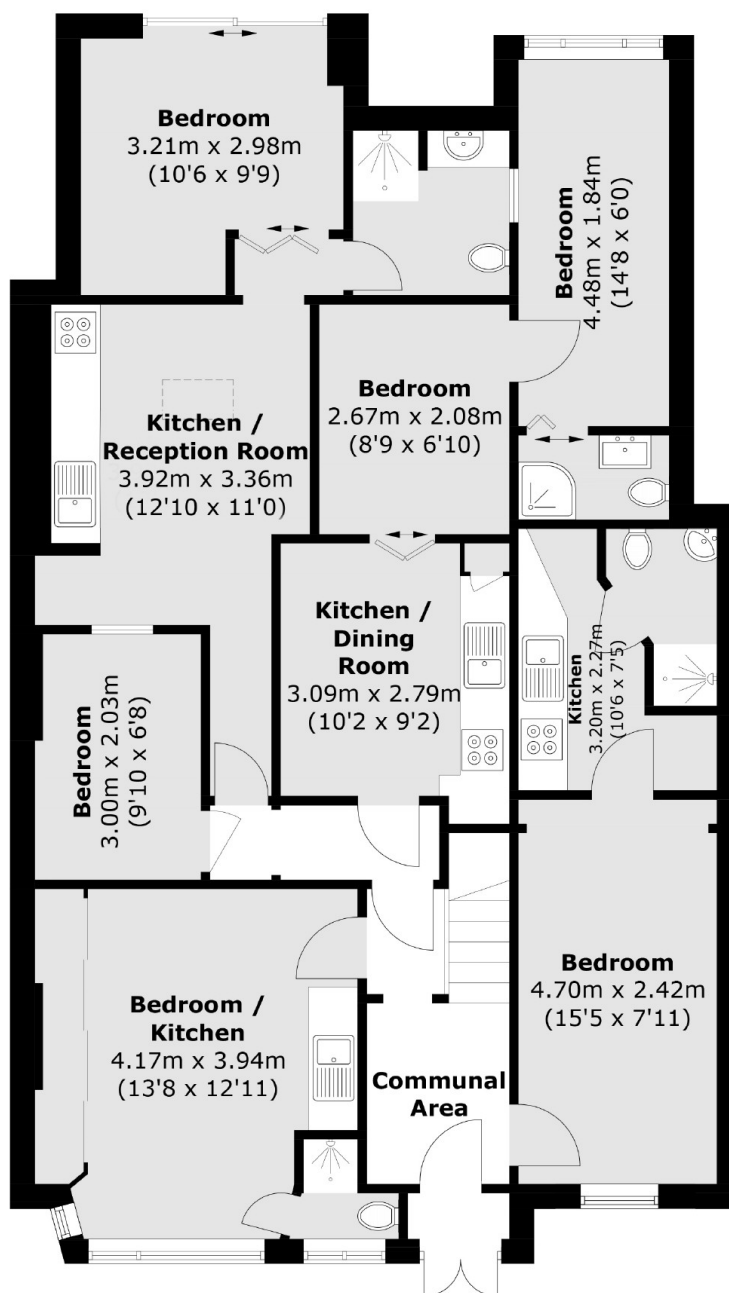
This ground floor flat is a great investment opportunity, with four self-contained studios generating a good rental income. The studios are currently occupied and can be vacant upon possession.

Cotswold Gardens is situated within the favourable Golders Green Estate; a very family orientated residential area. Local transport links include Cricklewood (Thameslink) station, the new Brent Cross West station, and numerous bus routes.

Features

- Ground Floor
- Four Self-Contained studios
- Investment Opportunity
- Close to Transport
- Long Lease
- No Onward Chain

Cotswold Gardens, London, NW2



Total area (approx.): 101.8 sq. m (1,095.8 sq. ft)
(Excluding Communal Area)