



## Church Lane, NW9

**£807** Per week

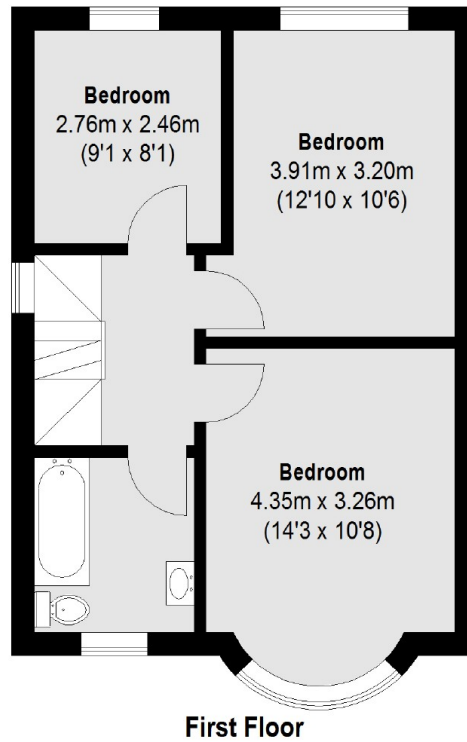
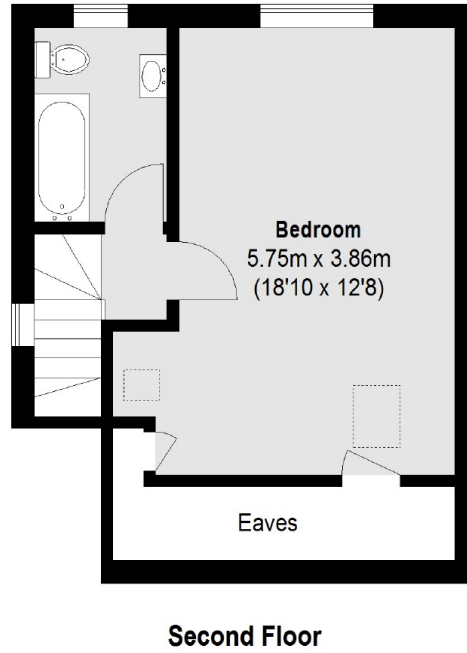
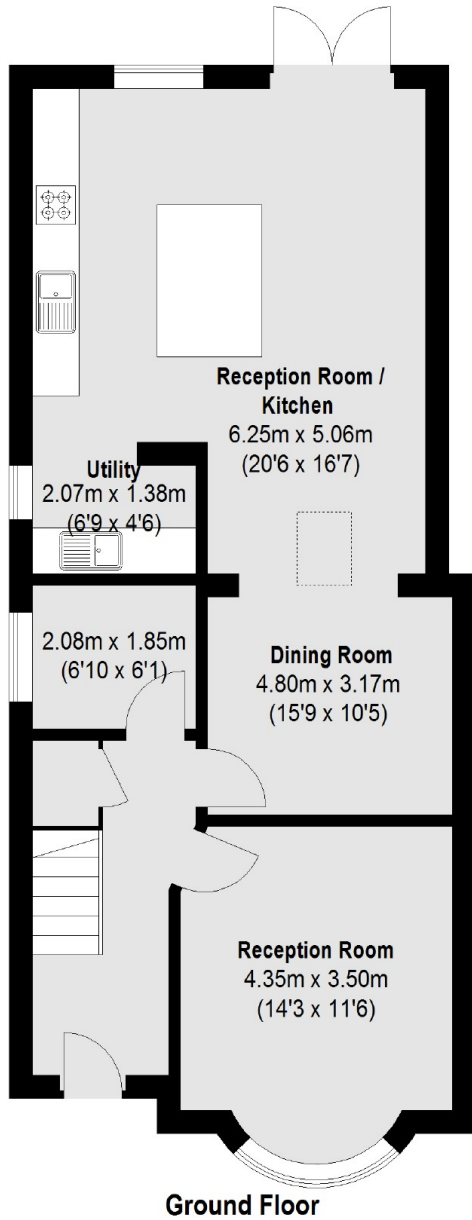
This well presented four bedroom two bathroom family home is ideally situated in The Hyde. Spread over three floors, the property has two reception rooms, a modern family kitchen with an integrated island, utility room, and bi-fold doors leading to a partially decked private rear garden.

Church Lane is well situated in The Hyde, with Wembley, Hendon, and Colindale nearby. You also have great outdoor space for family fun, good transport links with Kingsbury station, and easy access to the A406 and M1.

### Features

- Four Bedrooms
- Two Reception Rooms
- Two Bathrooms
- Integrated Island Kitchen
- Private Rear Garden
- Off Street Parking

# Church Lane, London, NW9



Total area (approx.): 142.29 sq. m (1532 Sq. ft) (Excluding Eaves)