



Teignmouth Road, NW2

£807 Per week

This split level three bedroom three bathroom first floor flat is ideally situated in the sought after Mapesbury. The flat is bright and spacious with a separate reception room, an eat-in family kitchen with all appliances, high ceilings, bespoke features, excellent storage space, and a private garden.

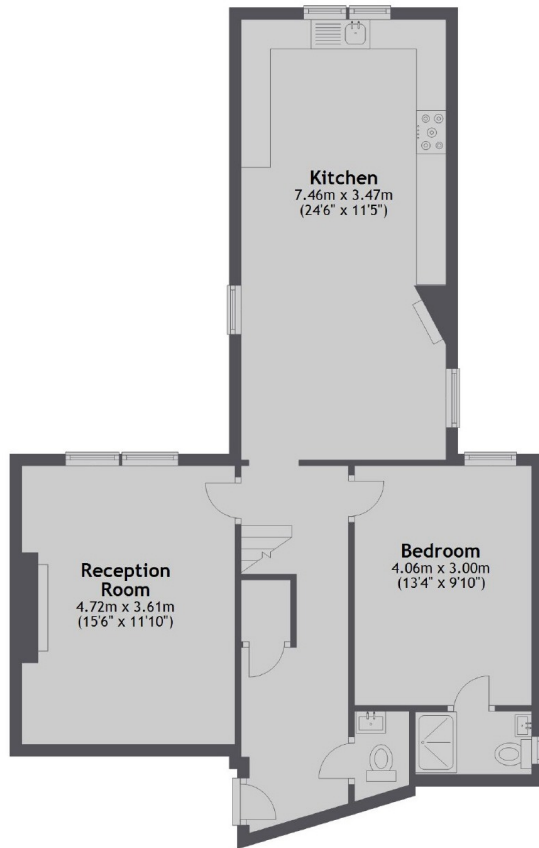
The property is ideally located for someone looking to settle down on a quiet street in the popular Mapesbury Conservation Area, with the Jubilee line under half a mile away.

Features

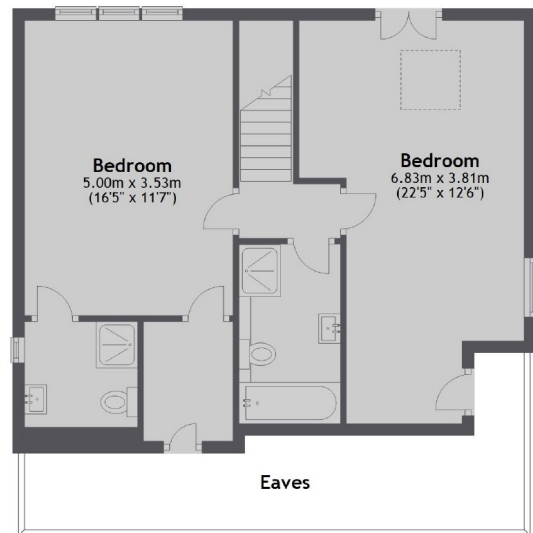
- Three Double Bedrooms
- Three Bathrooms
- Private Garden
- Private Parking
- Wood floors throughout
- Spilt Level

Teignmouth Road, London, NW2

Ground Floor



First Floor



Total area: approx. 127.9 sq. metres (1377.0 sq. feet)