



## Churchill Road, NW2

£775,000

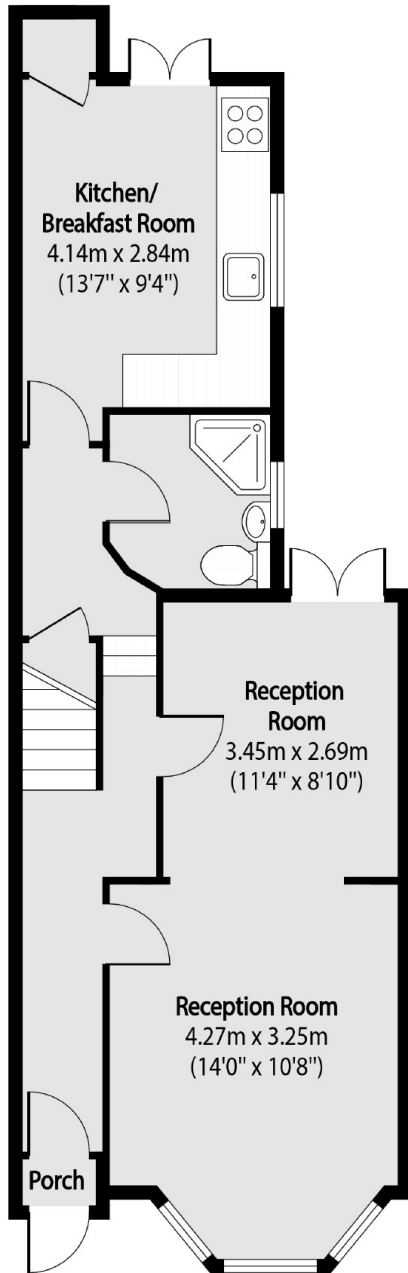
This terraced house is in need of modernisation throughout and offers a double reception room, a separate eat-in kitchen leading to the private garden, a shower room, three bedrooms, and a family bathroom on the first floor. This house can be extended, subject to planning permission.

Churchill Road is a pretty street closely located for both Willesden Green and Dollis Hill tube stations (Jubilee Line). Willesden Green High Road is close by offering a range of shops, bars, and restaurants.

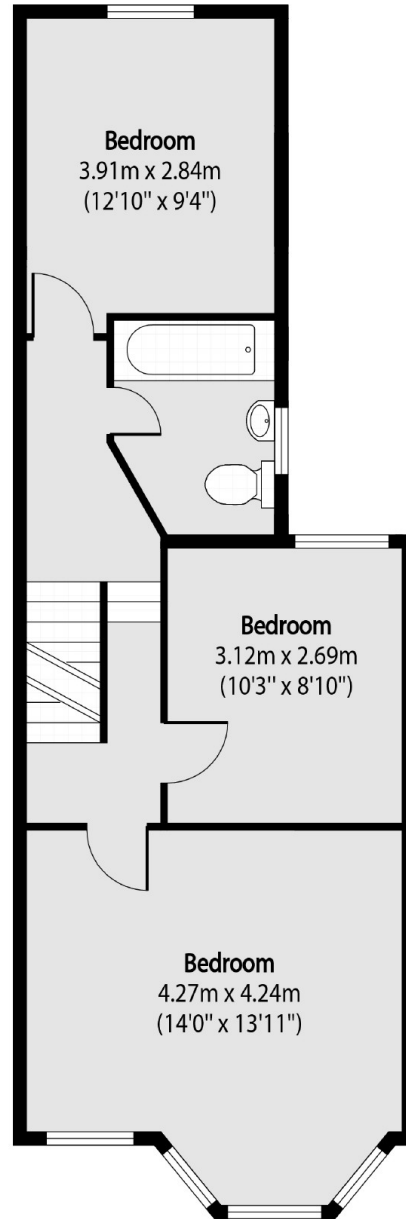
### Features

- Three Double Bedrooms
- Two Bathrooms
- West Facing Garden
- Potential to Extend (STPP)
- Terraced House
- Close to Transport

# Churchill Road, London, NW2



**Ground Floor**



**First Floor**

Total area (approx): 94.11 sq m (1013 sq. ft)