



## Minster Road, NW2

£730,000

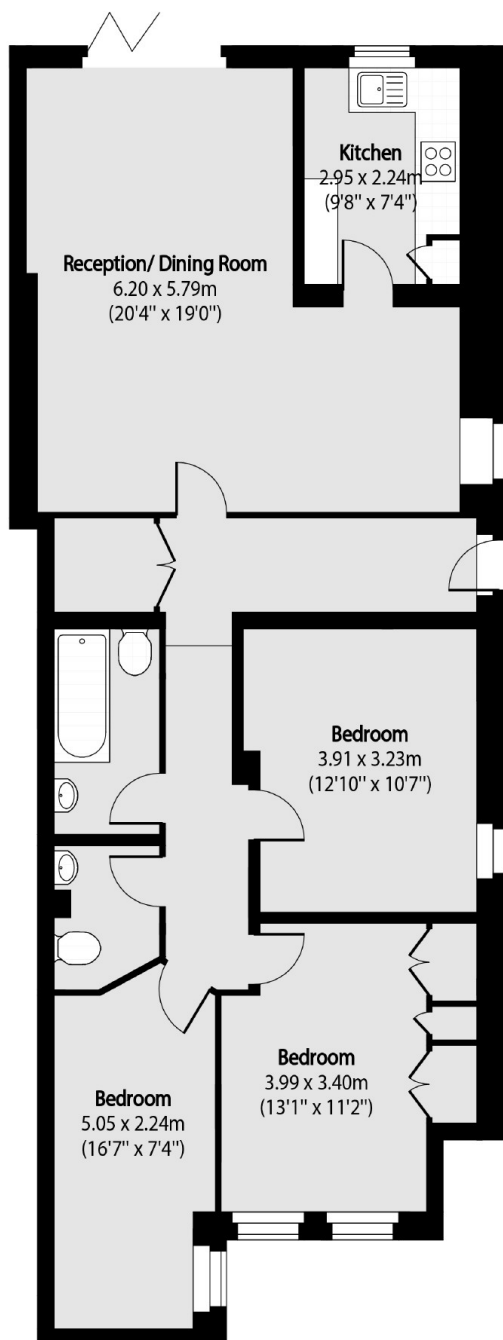
A ground floor maisonette with its own front door, measuring in excess of 1000 sq.ft. With three double bedrooms, a separate kitchen, a large reception room with bi-fold doors leading on to the private garden, a family bathroom, and a separate WC.

Minster Road is ideally located within easy reach of the ever popular West Hampstead with its boutique cafes, restaurants, and other local amenities. Transport links are easily available, with numerous bus routes and underground stations close by.

### Features

In Excess Of 1000 Sq.Ft.  
Three Double Bedrooms  
Ground Floor  
Large Reception Room  
Bathroom And WC  
Private Garden

# Minster Road, London, NW2



Total area (approx): 93.55 sq m (1007 sq. ft)