



Prout Grove, NW10

£750 Per week

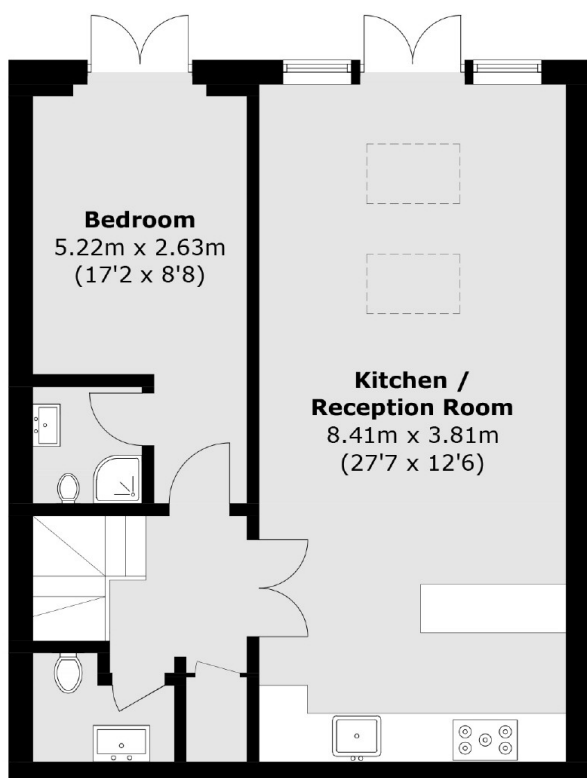
This split level three bedroom garden flat is ideal for entertaining. The property has an open plan living area with an integrated kitchen and breakfast bar with doors leading to a private patio and garden. You also have three bathrooms, a separate WC, and good storage space.

Prout Grove is ideally located for all local amenities found on Willesden High Road, with the open spaces of Gladstone Park also nearby. Neasden (Jubilee Line) is the closest station for direct links around the city.

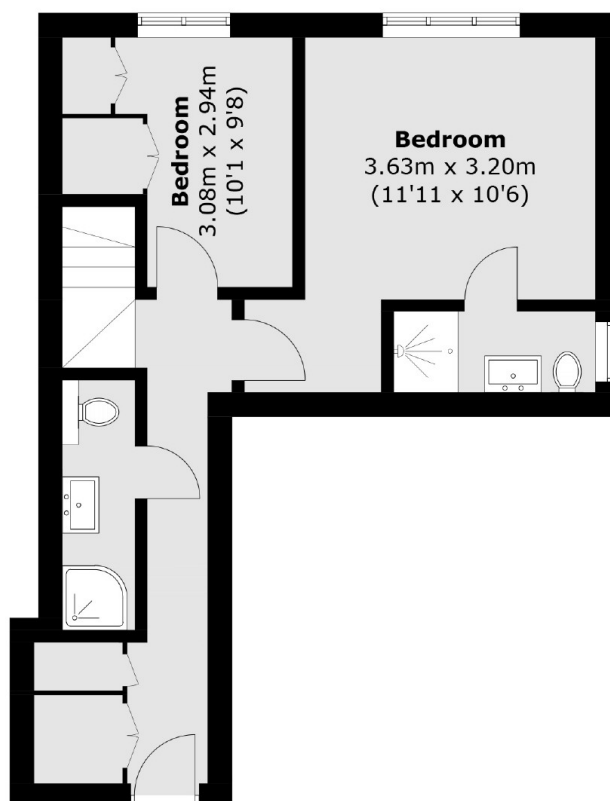
Features

- Three Bedrooms
- Open Plan
- Integrated Kitchen
- Two Bathrooms
- Newly Renovated
- Split Level

Prout Grove, London, NW10



Lower Ground Floor



Upper Ground Floor

Total area (approx.): 94.3 sq. m (1,015.0 sq. ft)