



Chapter Road, NW2

£625,000

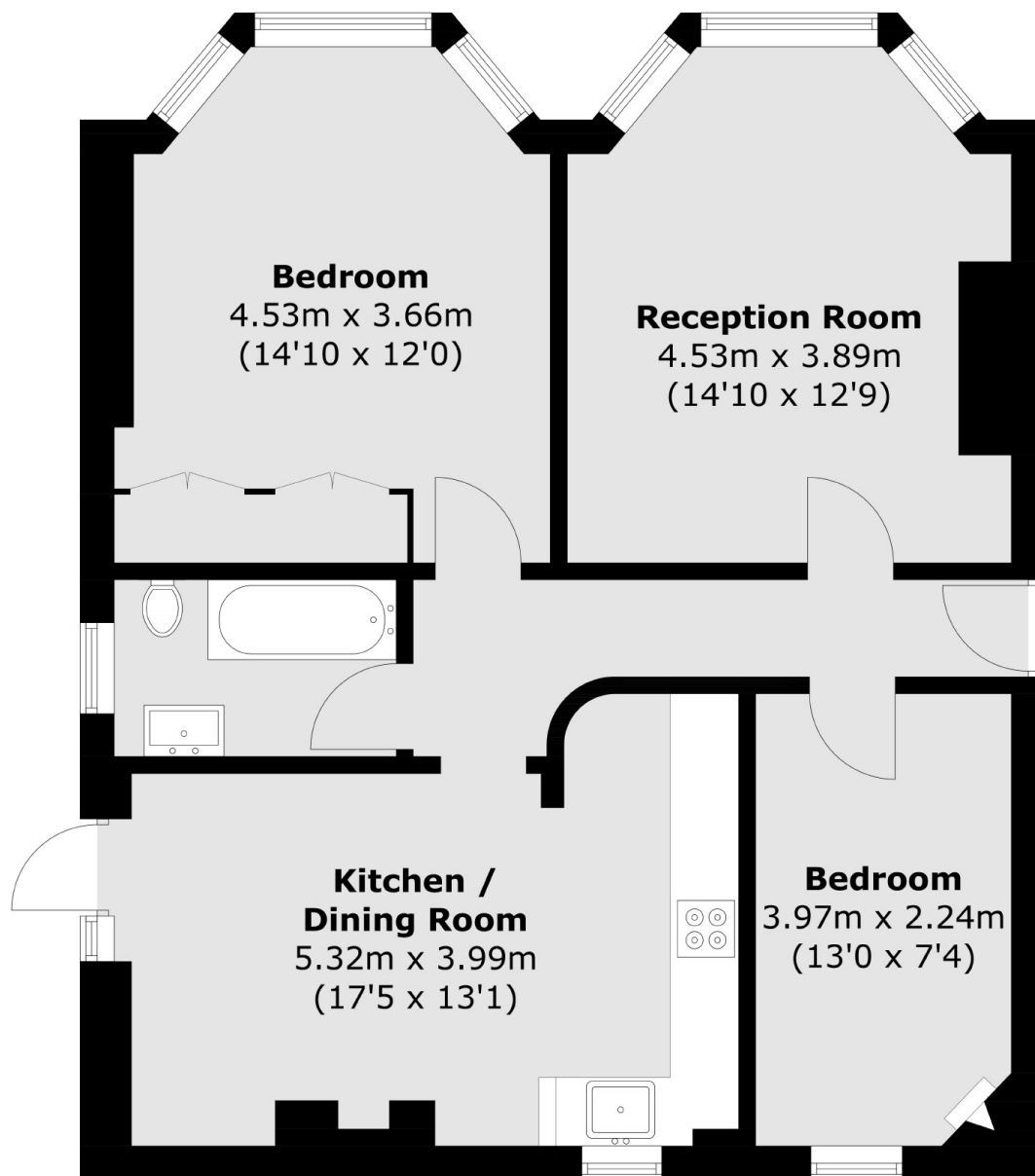
Situated on the ground floor of a well-presented mansion block is this immaculate two double bedroom flat benefitting from a separate reception and a spacious kitchen/diner leading to the communal gardens. The flat boasts original features and high ceilings throughout and comes with a share of the freehold.

Osborne Mansions is ideally located on a quiet residential road and is just 0.4 miles from Dollis Hill station (Zone 3) and 0.5 miles from Willesden Green (Zone 2) and its range of local amenities including Gail's Bakery.

Features

- Two Double Bedrooms
- Ground Floor Flat
- Separate Reception Room
- Communal Gardens
- Close To Willesden Green
- Share Of Freehold

Chapter Road, London, NW2



Total area (approx.): 73.2 sq. m (787.9 sq. ft)