



## Walm Lane, NW2

£600 Per week

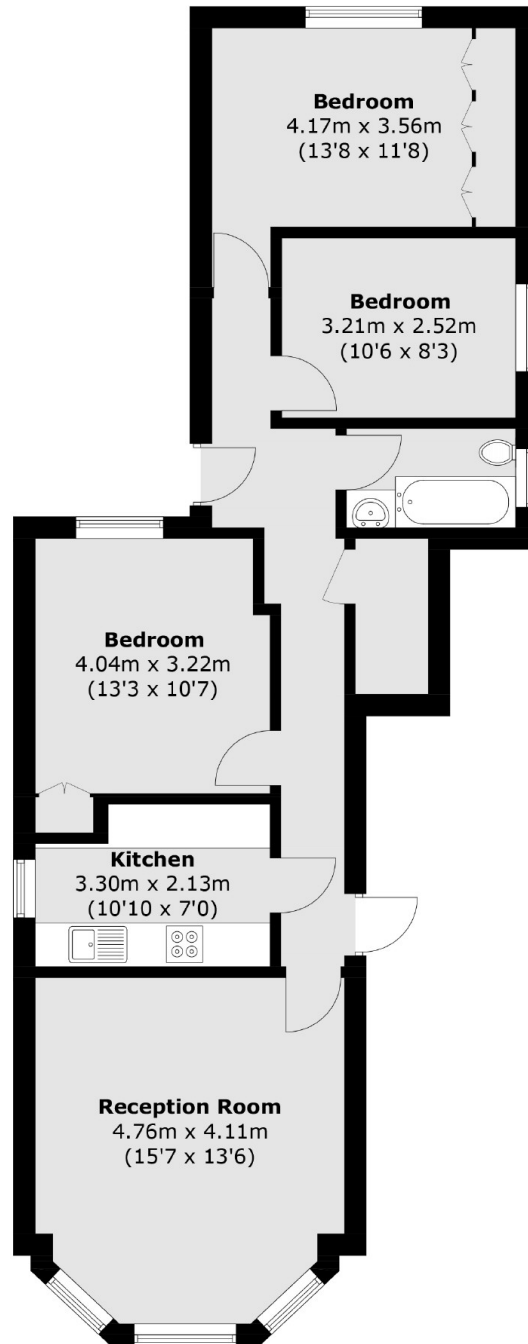
This three bedroom ground floor flat is ideally situated with Mapesbury Dale a stones throw away. The flat has a spacious reception, a separate kitchen, well sized bedrooms, good storage space, a tiled bathroom, off street parking and access a large communal garden.

Walm Lane is well situated for Willesden Green and Kilburn high streets with many boutique cafés, restaurants and local amenities. Willesden Green, Kilburn stations (Jubilee Line) and many bus services are also on your doorstep.

### Features

- Three Bedrooms
- Spacious Reception
- Separate Kitchen
- Tiled Bathroom
- Communal Garden
- Off Street Parking

# Walm Lane, London, NW2



Total area (approx.): 76.0 sq. m (818.0 sq. ft)