

Flowers Close, NW2

£315,000

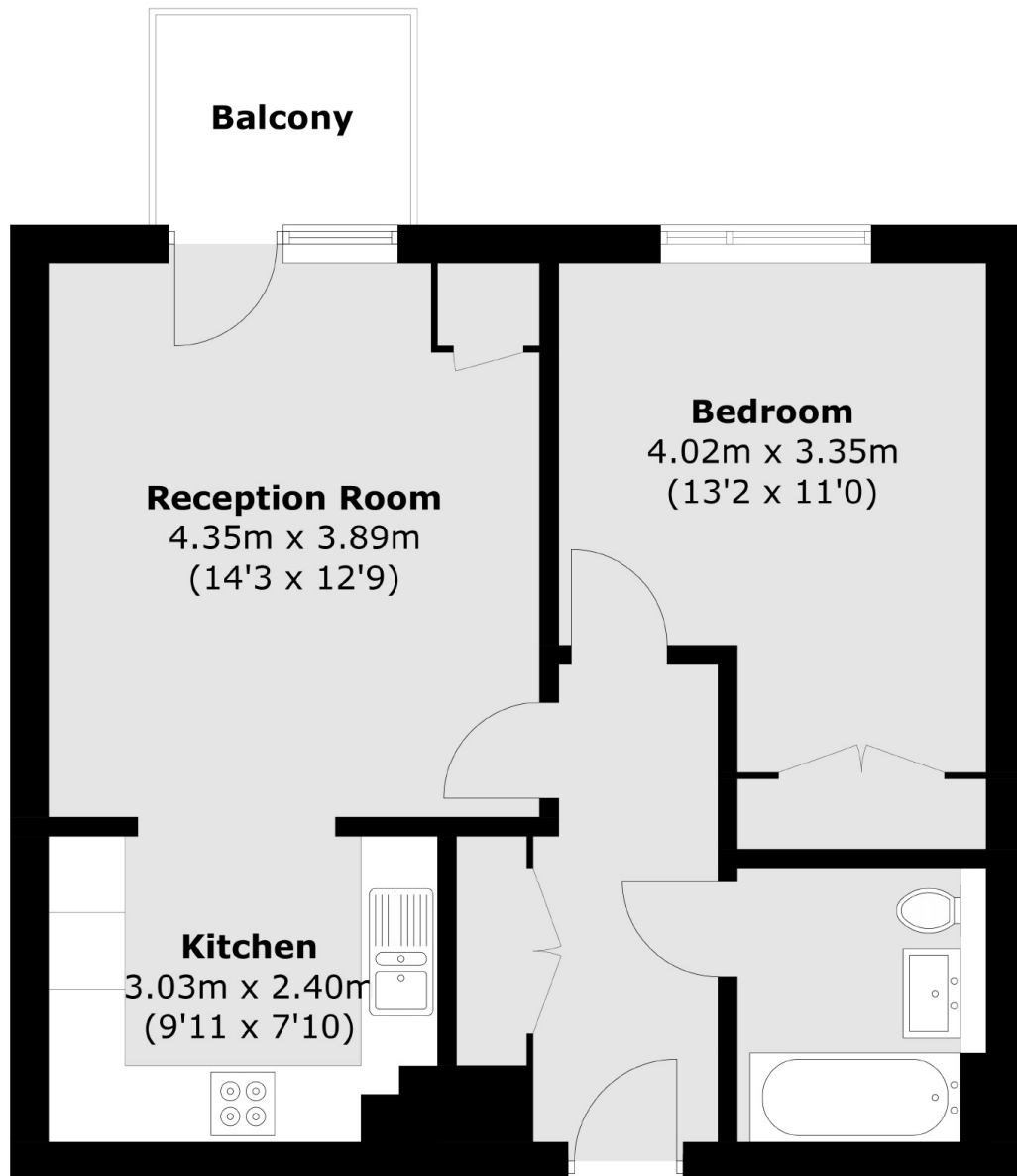
Situated on the second floor of a modern purpose built development is this one double bedroom apartment with allocated underground parking and a private balcony. The property benefits from an open plan living area with a well equipped kitchen, ample storage throughout and comes with a lease in excess of 100 years.

Flowers Close is moments away from the ever-popular Gladstone Park and the variety of amenities of Dollis Hill and Brent Cross West. There are also great transport links into the City including the A406 and the M1.

Features

- One Bedroom Apartment
- Private Balcony
- Circa 550 Sq.Ft
- Allocated Underground Parking
- Modern Development
- Moments From Gladstone Park

Flowers Close, London, NW2



Total area (approx.): 51.0 sq. m (549 sq. ft)
Balcony area (approx.): 3.3 sq. m (35.5 sq. ft)