



## Galsworthy Road, NW2

£550,000

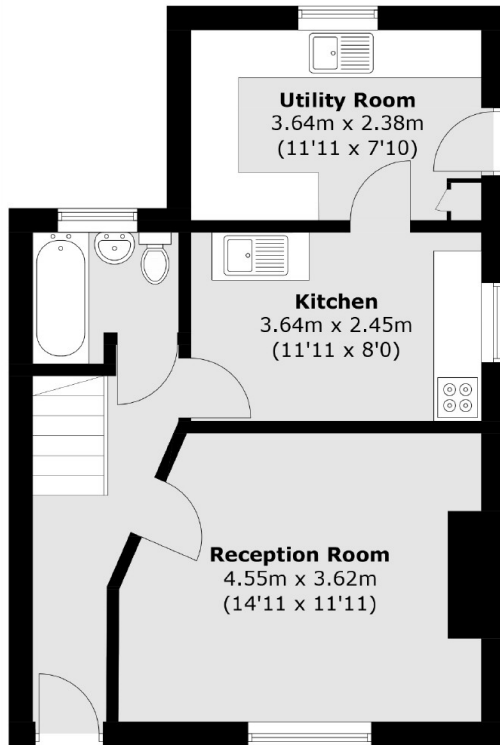
This end of terrace freehold house offers great potential to renovate and extend (STPP) and currently benefits from a spacious reception, a separate kitchen/diner leading out on to a large private garden, three bedrooms and a family bathroom.

Galsworthy Road is situated in a quiet location close to the shops and amenities of Cricklewood Broadway and Kilburn. West Hampstead and Childs Hill are both a short distance away too.

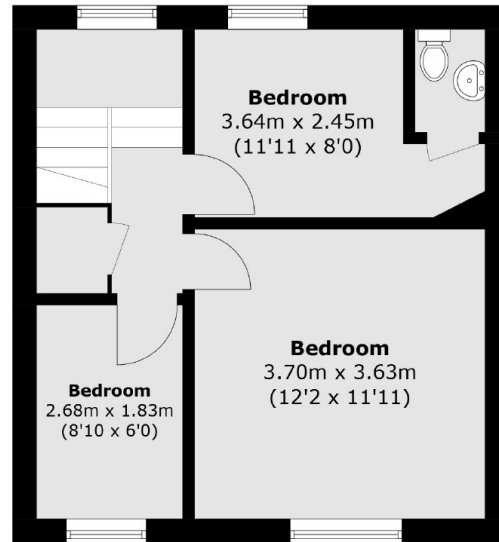
### Features

- Three Bedrooms
- Large Private Garden
- In Need of Modernisation
- Freehold
- Off Street Parking
- No Onward Chain

# Galsworthy Road, London, NW2



**Ground Floor**



**First Floor**

Total area (approx.): 78.5 sq. m (844.9 sq. ft)