



Gladstone Park Gardens, NW2

£1,350,000

Dexters



Gladstone Park Gardens, NW2

Developed and rebuilt to a premium standard, this exceptional five bedroom, four bathroom semi-detached house offers great attention to detail and high-spec living throughout, making it a perfect family home.

The ground floor accommodates a spacious open plan double reception with a German kitchen with fully integrated Siemens appliances as well as a wine fridge, a Quooker tap and food waste disposer. This level is finished with Stucco Veneziano walls and tiled flooring with Heatmiser underfloor heating and also offers a utility room, a guest WC and a study/bedroom with en suite.

The suspended concrete staircase leads to the first floor with three double bedrooms and two bathrooms. On the second floor is the master suite, with an en suite with sauna and numerous built-in wardrobes. Further benefits include triple glazing throughout, cat-6 wiring, Smart tech system (both sound and video with speakers on the ground floor, garden and master bedroom/en-suite), CCTV, alarm and intercom system, external insulation throughout, LED IP65 lighting system with mood lighting and lifetime guarantee.

Situated just moments from the ever popular Gladstone Park and its outdoor activities. With Brent Cross West station (Thameslink), Brent Cross Shopping Centre and multiple road connections (A406, A41, M1) nearby.

Features


- Five Bedrooms
- Four Bathrooms
- Large Private Garden
- High Specification
- Three Balconies
- Chain Free

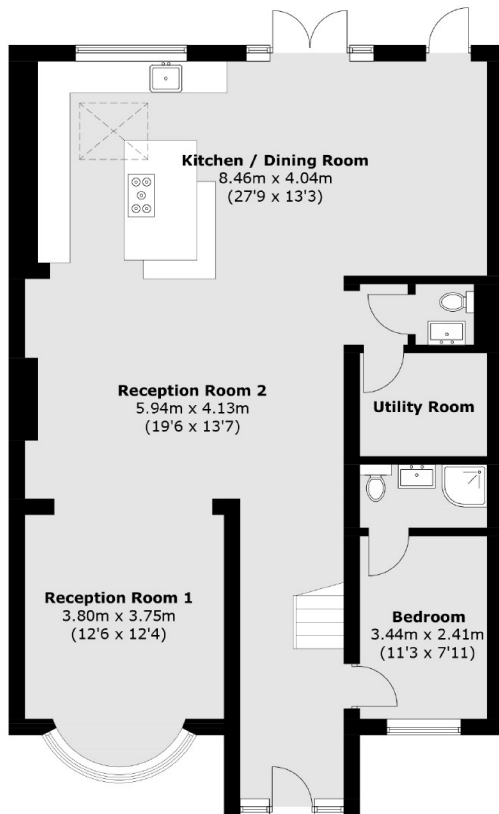




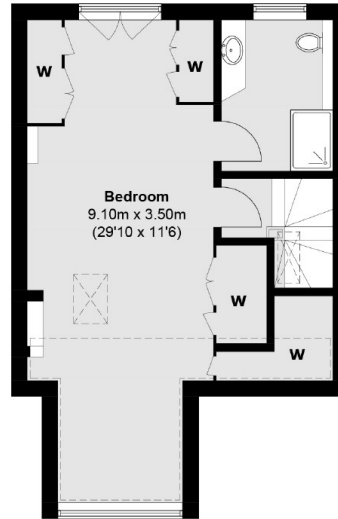


Gladstone Park Gardens, London, NW2

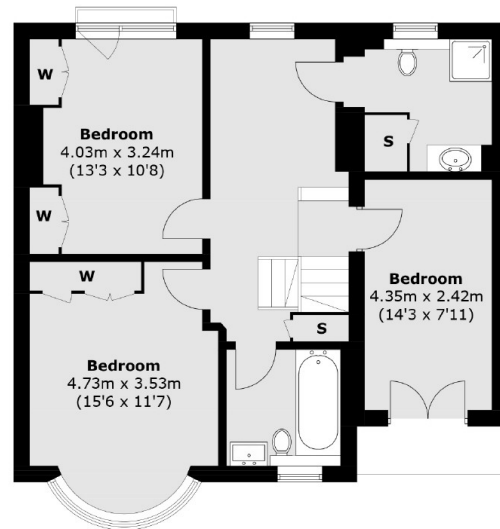
 = Reduced headroom below 1.5m / 5'0



Ground Floor



Second Floor



First Floor

Total area (approx.): 225.3 sq. m (2,424.9 sq. ft)
External Area : 2.5 sq. m (26.9 sq. ft)