



Fordwych Road, NW2

£692 Per week

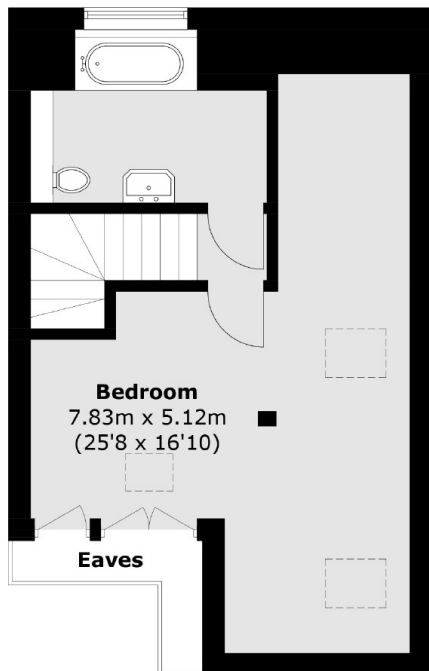
This split level three bedroom, two bathroom is well situated with easy access to West Hampstead and Kilburn. The property has three double bedrooms, two bathrooms, a spacious open plan living area with a modern integrated kitchen. The property also has a private garden and good storage space.

Fordwych Road is well located in Cricklewood with many local amenities, shops and restaurants. You also have excellent transport links with many bus routes into the city, West Hampstead, Kilburn and Cricklewood Thameslink Stations are nearby.

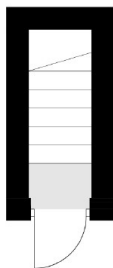
Features

- Three Bedrooms
- Two Bathrooms
- Open Plan
- Modern Kitchen
- Good Storage Space
- Private Garden

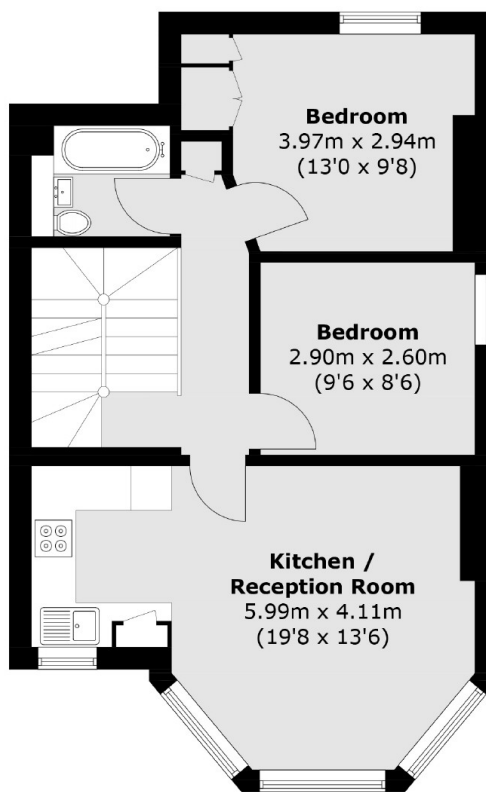
Fordwych Road, London, NW2



Second Floor



Ground Floor



First Floor

Total area (approx.): 90.7 sq. m (976.2 sq. ft)