

## Chatsworth Road, NW2

£650,000

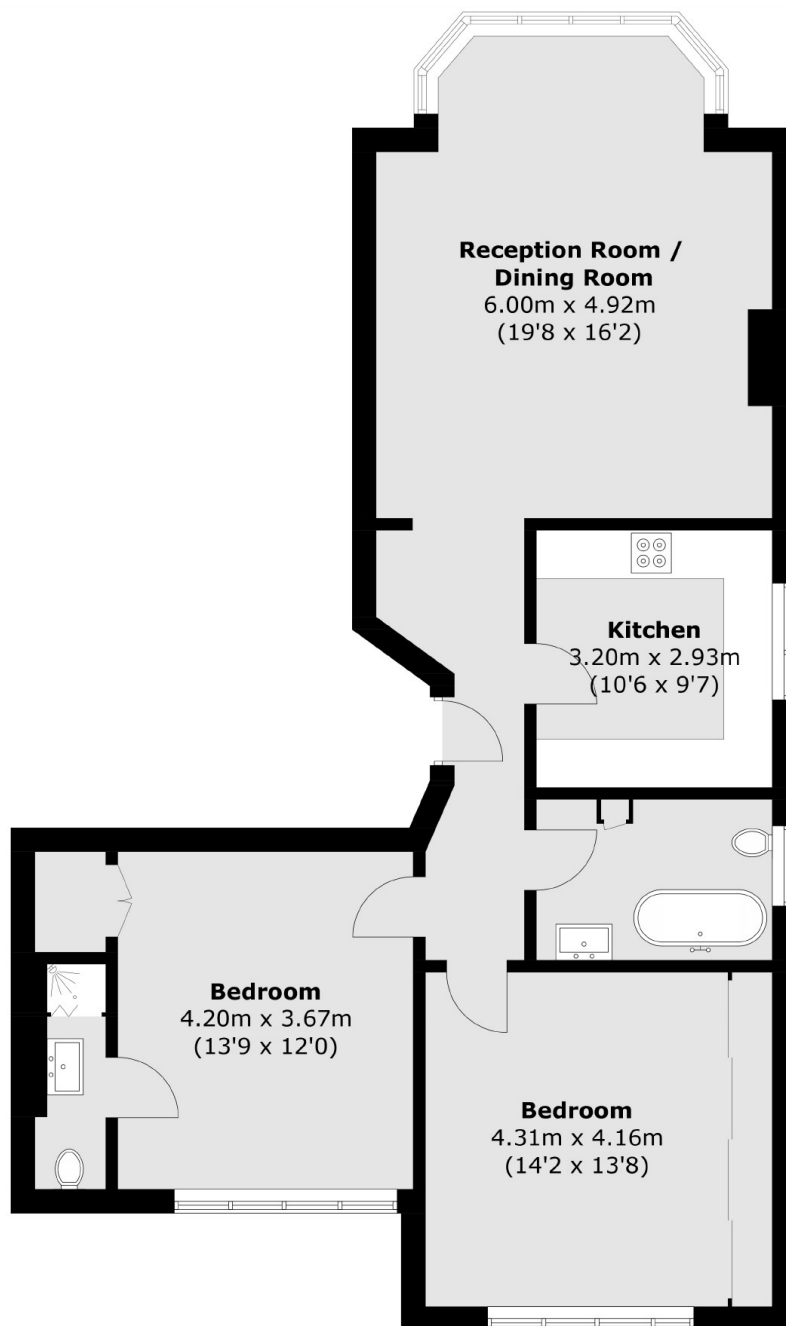
A first floor apartment measuring in excess of 960 sq.ft. With two double bedrooms, two bathrooms, a large reception room and separate well-fitted modern kitchen. The property comes with off-street parking and no onward chain.

Chatsworth Road is ideally situated close to Willesden Green with its many local amenities, delis, shops and cafés. Willesden Green station is moments away and Cricklewood Thameslink is also near, offering good transport links to the City and easy motorway access.

### Features

- Two Double Bedrooms
- First Floor
- Separate Kitchen
- Large Reception
- Off Street Parking
- No Onward Chain

# Chatsworth Road, London, NW2



Total area (approx.): 89.9 sq. m (967.7 sq. ft)