

## Shoot Up Hill, NW2

£437,000

Situated within a period conversion is this three bedroom first floor flat offering a family bathroom, en suite to the main bedroom, an open plan living area with well-fitted kitchen, access to beautiful communal gardens and off-street parking. The property comes with no onward chain.

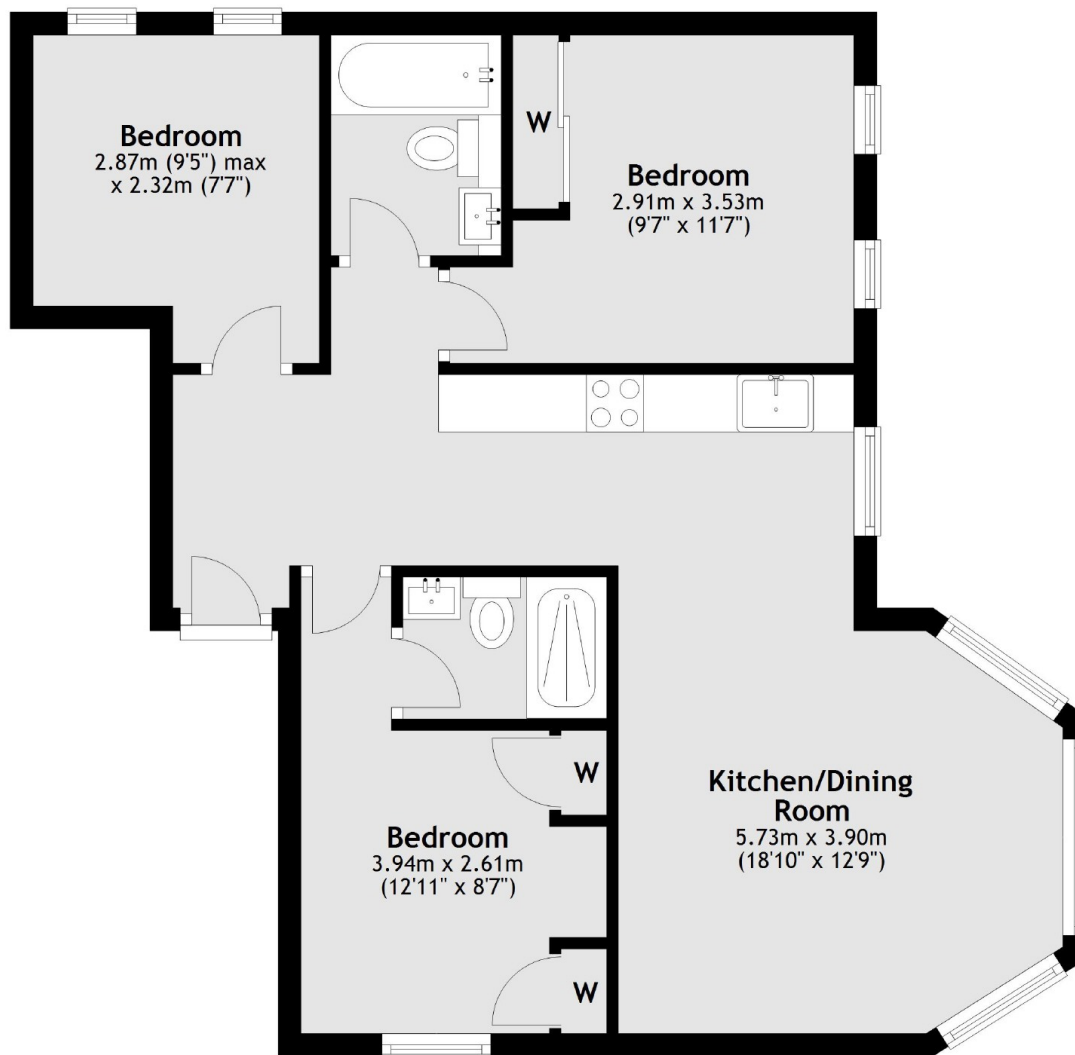
Hill Court is a short distance from Kilburn station (Jubilee line) & Brondesbury Overground station as well as the large array of shops, cafes, restaurants and supermarkets found on Kilburn High Road and Cricklewood Broadway.

### Features

- Three Bedrooms
- Two Bathrooms
- First Floor Flat
- High Ceilings
- Communal Gardens
- Off-Street Parking

# Shoot Up Hill, London, NW2

## First Floor



Total area: approx. 55.5 sq. metres (597.8 sq. feet)