

## Shoot Up Hill, NW2

£475,000

Situated within a period conversion is this three bedroom first floor flat offering a family bathroom, en-suite in the master bedroom, an open-plan living area with well-fitted kitchen, access to beautiful communal gardens and off street parking. The property comes with no onward chain.

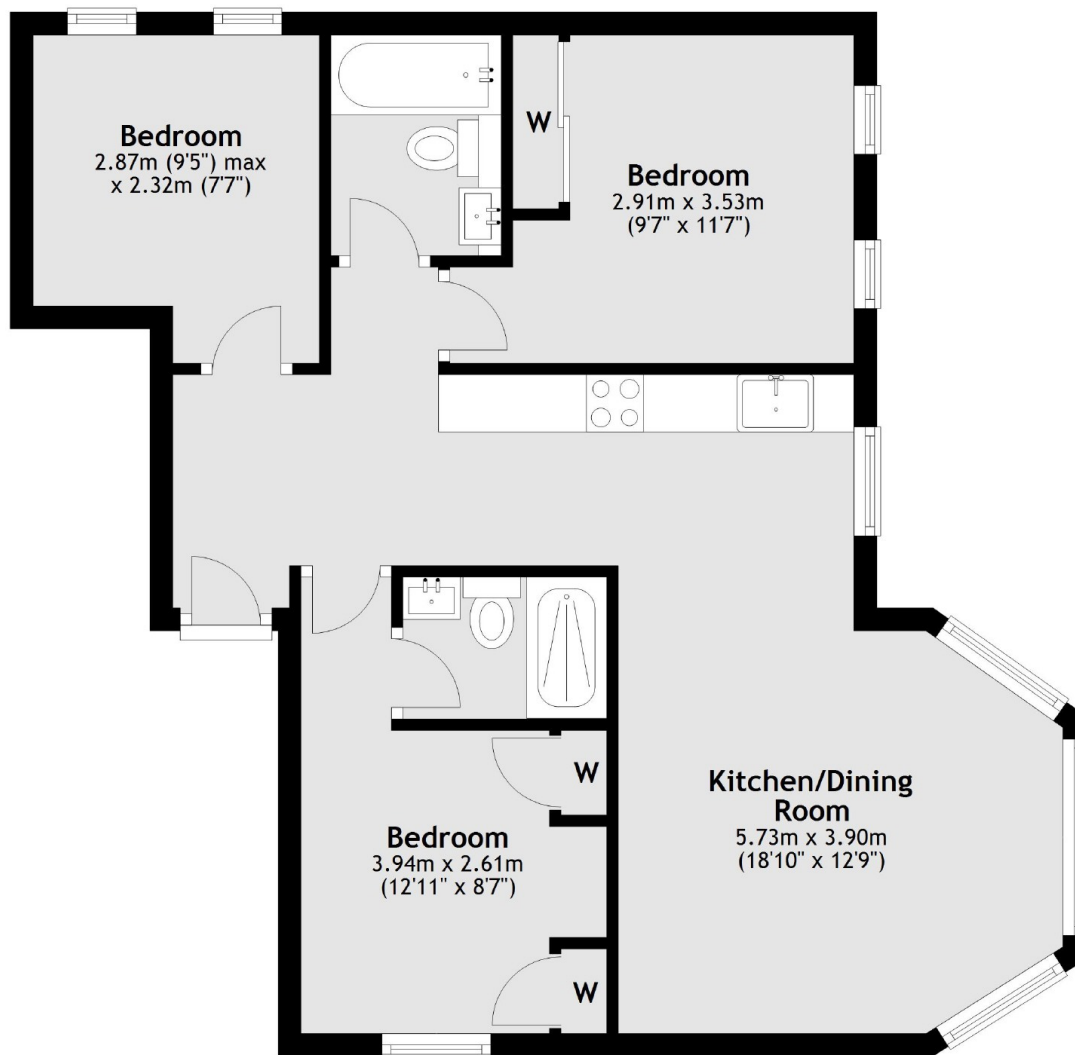
Hill Court is a short distance from Kilburn Station (Jubilee Line) & Brondesbury Overground Station as well as the large array of shops, cafes, restaurants and supermarkets found on Kilburn High Road and Cricklewood Broadway.

### Features

- Three Bedrooms
- Two Bathrooms
- First Floor Flat
- High Ceilings
- Communal Gardens
- Off Street Parking

# Shoot Up Hill, London, NW2

## First Floor



Total area: approx. 55.5 sq. metres (597.8 sq. feet)