



## Anson Road, NW2

£350,000

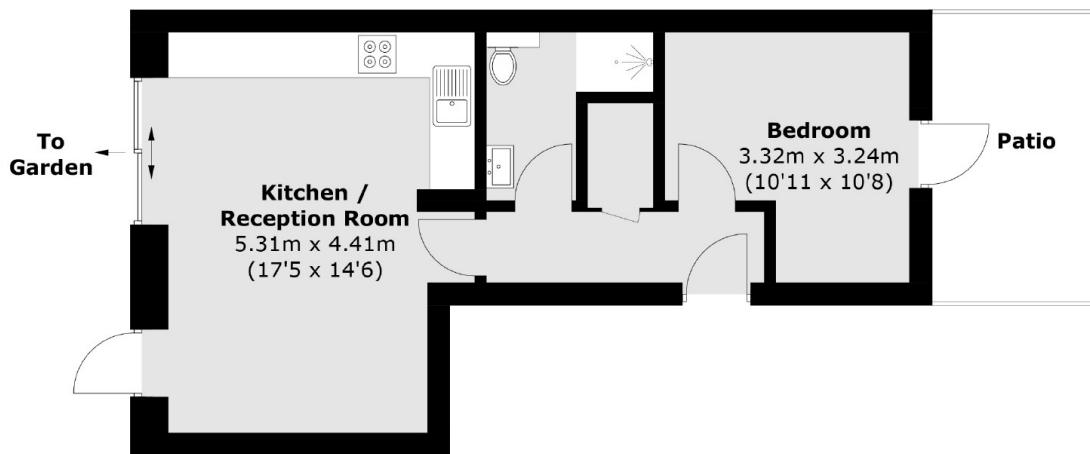
This one bedroom ground floor flat is situated within a new build development which was completed recently and to a high standard throughout. With an open plan living area with access to the garden, bathroom and a private patio accessed via the bedroom. The property comes with a share of the freehold.

The development is a short distance from Willesden Green station (Jubilee Line), Cricklewood station (Overground and Thameslink) and various bus routes with easy access into the City. A range of eateries and supermarkets are close by too.

### Features

- New Build
- Ground Floor
- One Bedroom
- Open Plan Living Area
- Private Patio And Garden
- Share Of Freehold

# Anson Road, London, NW2



Total area (approx.): 40.7 sq. m (438.1 sq. ft)