



## Anson Road, NW2

£725,000

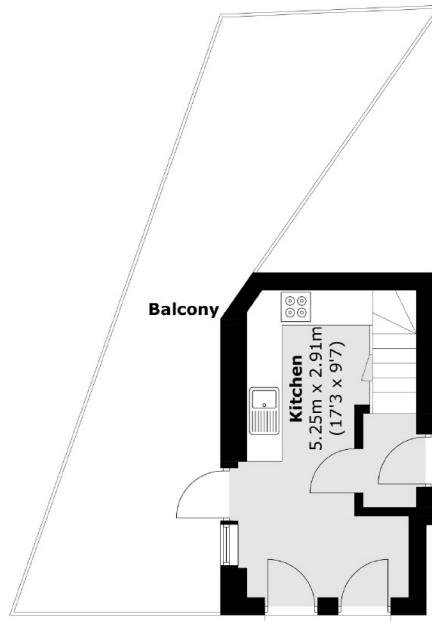
This three double bedroom duplex flat is situated within a new build development, which was completed recently and to a high standard throughout. With a separate reception room with access to a balcony and an eat-in kitchen with direct access to a large private terrace. The property comes with a share of the freehold.

The development is a short distance from Willesden Green station (Jubilee liine), Cricklewood station (Overground and Thameslink) and various bus routes with easy access into the City. A range of eateries and supermarkets are nearby too.

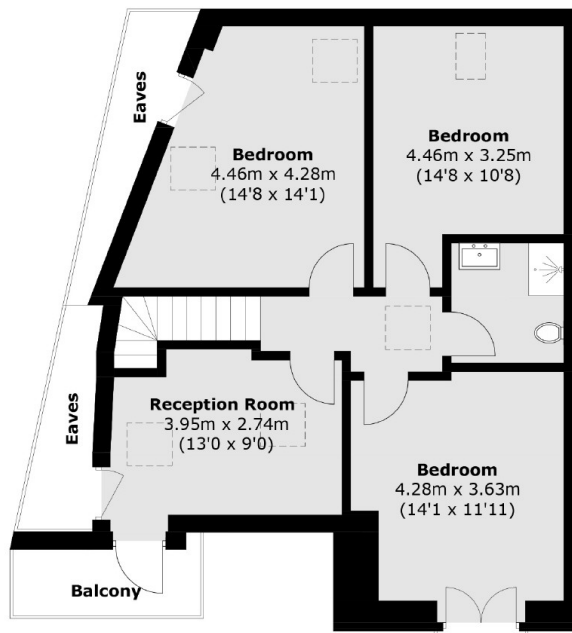
### Features

- New Build
- Duplex Apartment
- Three Double Bedrooms
- Eat-In Kitchen
- Private Balcony And Terrace
- Share Of Freehold

# Anson Road, London, NW2



**Ground Floor**



**First Floor**

Total area (approx.): 82.2 sq. m (884.8 sq. ft)  
(Excluding Eaves)

Balcony: 31.0 sq. m (333.7 sq. ft)