



Anson Road, NW2

£400,000

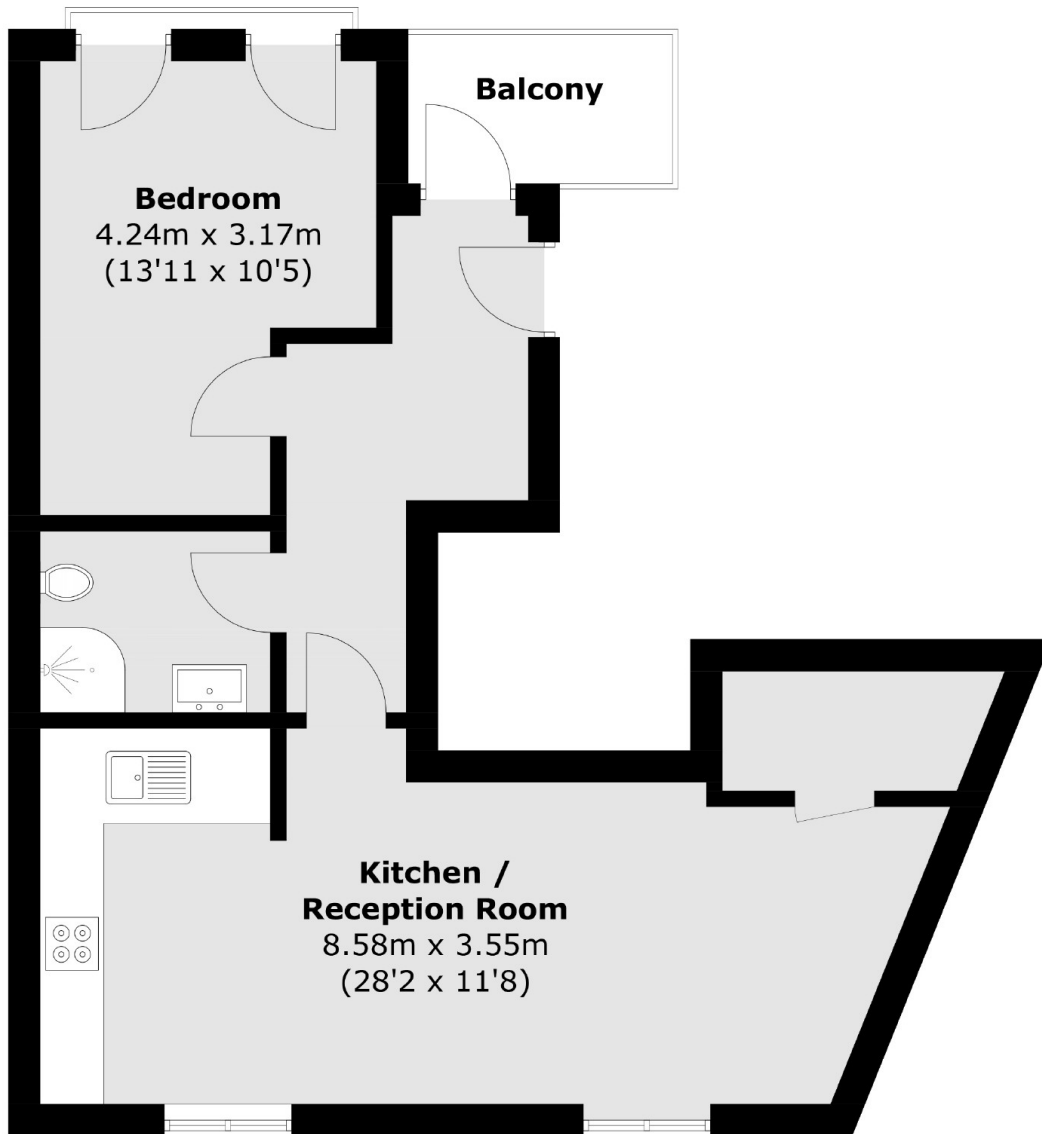
This one bedroom first floor flat is situated within a new build development, which was completed recently and to a high standard throughout. With an open-plan living area, bathroom and a private terrace. The property comes with a share of the freehold.

The development is a short distance from Willesden Green Station (Jubilee Line), Cricklewood Station (Overground and Thameslink) and various bus routes with easy access into The City. A range of eateries and supermarkets are closeby too.

Features

- New Build
- First Floor
- One Bedroom
- Open Plan Living Area
- Private Terrace
- Share Of Freehold

Anson Road, London, NW2



Total area (approx.): 54.0 sq. m (581.2 sq. ft)
Balcony: 3.5 sq. m (37.7 sq. ft)