



Oman Avenue, NW2

£650,000

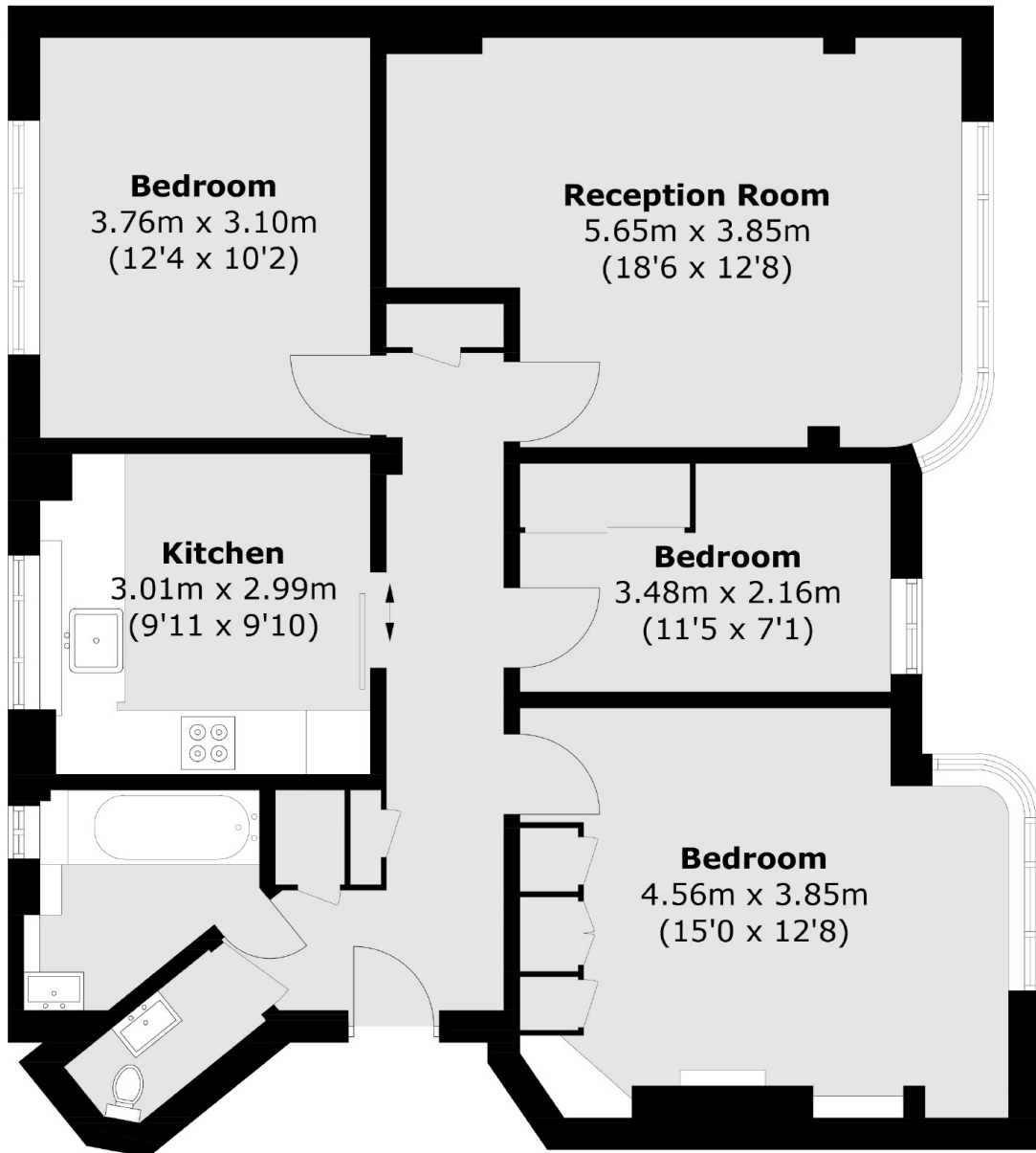
This three bedroom third floor flat is ideally situated moments away from Gladstone Park with incredible skyline views. The flat is accessed by a private lift and has a separate well-fitted kitchen, a large bright reception, bathroom and separate WC, ample storage throughout and comes with no onward chain.

Oman Avenue is situated alongside the 86 acres of green open spaces of Gladstone Park. Both Dollis Hill and Willesden Green stations (Jubilee line) are nearby as well as the vast range of amenities of Walm Lane and Cricklewood Broadway.

Features

- Three Bedrooms
- Separate Kitchen
- Spacious Reception
- No Onward Chain
- Gladstone Park
- Private Lift

Oman Avenue, London, NW2



Total area (approx.): 83.6 sq. m (899.8 sq. ft)