



Gladstone Park Gardens, NW2

£1,500 Per week

Dexters



Gladstone Park Gardens, NW2

This exceptional five bedroom, four bathroom semi-detached house has been developed to a premium standard with great attention to detail making it a perfect family home.

The substantial ground floor offers a spacious open-plan living area designed for the entertaining family with a double reception, stylish gas fireplace, integrated Island kitchen with German fixtures, Siemens appliances, wine cooler, Quooker tap, waste disposal, filtered drinking water and a separate dining area. You also have heritage style double doors leading to the landscaped private garden.

This level is finished with Stucco Veneziano walls and tiled flooring, Heatmiser underfloor heating, a utility and plant room, a guest WC, study/bedroom with en-suite shower room.

A suspended concrete staircase leads to the first floor with a spacious landing offering three double bedrooms with built in storage and one with access to a private balcony. You also have a family bathroom and a fully tiled shower room.

The primary suite is bright and spacious spread over the second floor with ample storage space, a Juliet balcony with stunning views over the capital and a primary en-suite with integrated steam room.

Features


- Five Bedrooms
- Four Bathrooms
- Open Plan Living Area
- Integrated Island Kitchen
- Landscaped Private Garden
- Feature Gas Fireplace

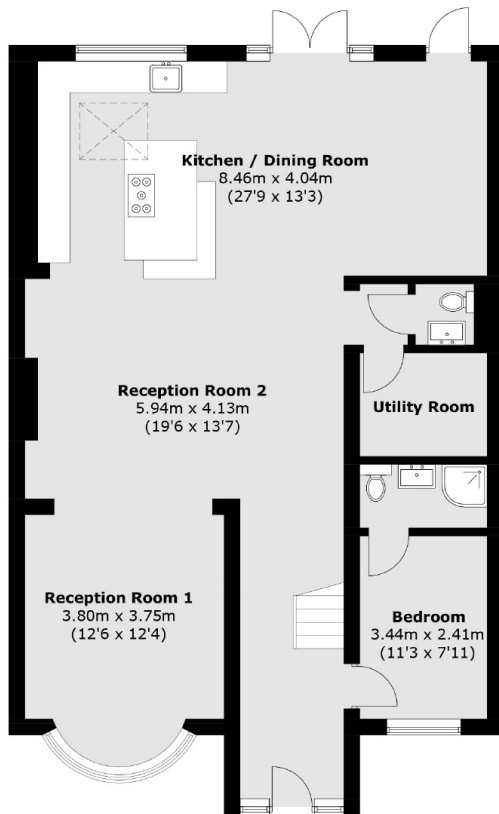




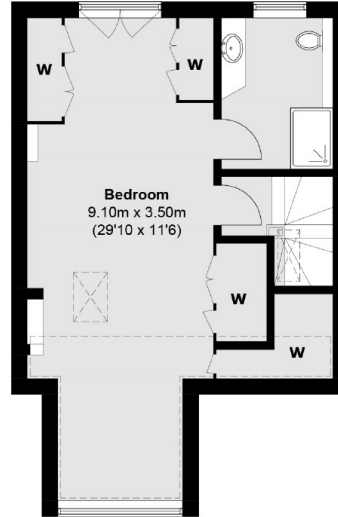


Gladstone Park Gardens, London, NW2

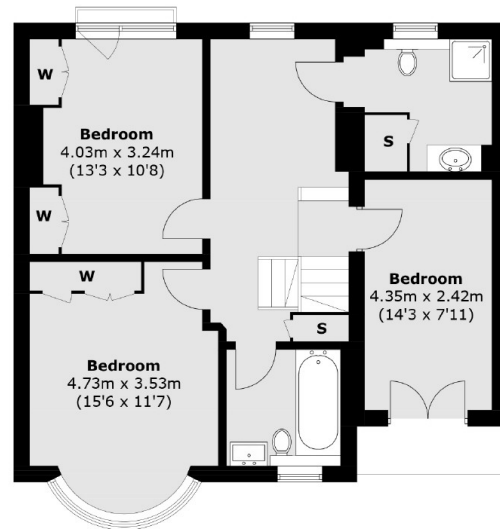
 = Reduced headroom below 1.5m / 5'0"



Ground Floor



Second Floor



First Floor

Total area (approx.): 225.3 sq. m (2,424.9 sq. ft)
External Area : 2.5 sq. m (26.9 sq. ft)