



## Cotswold Gardens, NW2

£475,000

This first floor flat is a great investment opportunity with three self-contained studios generating a good rental income. The studios are currently occupied and can be vacant upon possession.

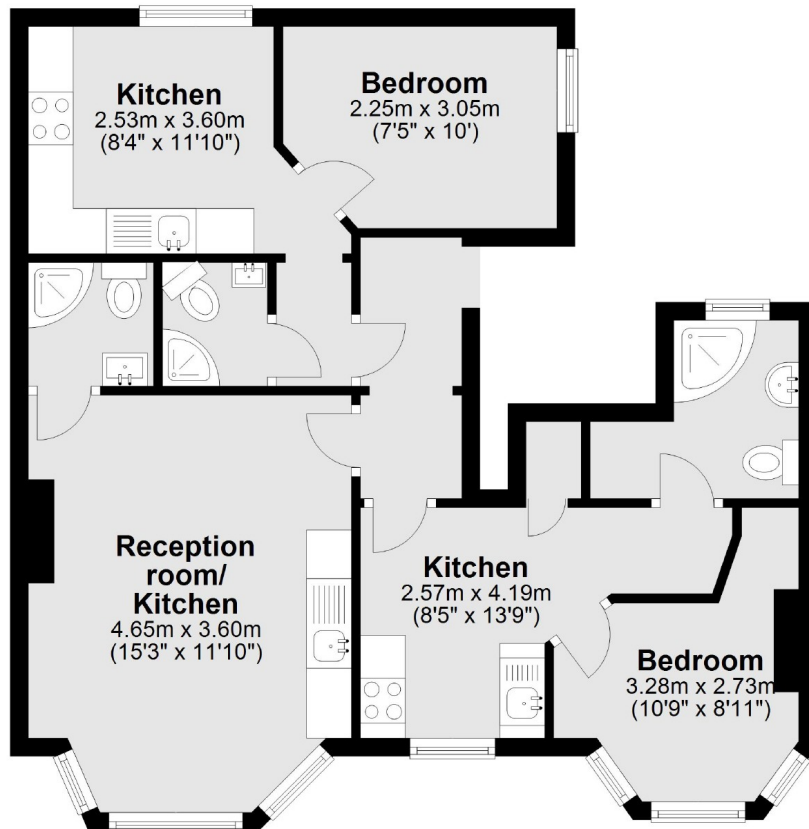
Cotswold Gardens is situated within the favourable Golders Green Estate; a very family orientated residential area. Local transport links include Cricklewood (Thameslink) station, the new Brent Cross West station and numerous bus routes.

### Features

- First Floor
- Three Self-Contained Studios
- Investment Opportunity
- Close to Transport
- Long Lease
- No Onward Chain

# Cotswold Gardens, London, NW2

## First Floor



Total area: approx. 57.9 sq. metres (623.7 sq. feet)