



Alder Grove, NW2

£807 Per week

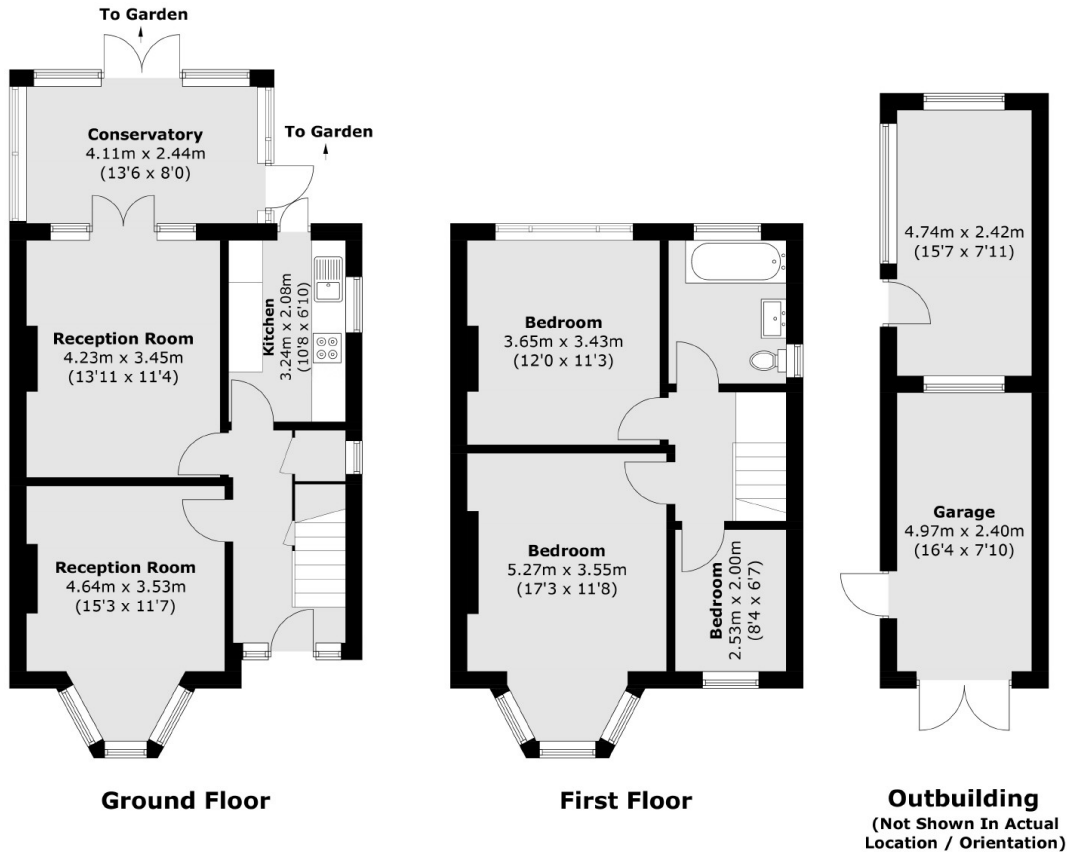
This three bedroom semi detached family house is ideally situated close to Gladstone Park with easy access to transport links. The house is spread over two floors and offers excellent living space throughout with off street parking and a private rear garden.

Alder Grove is ideally situated with a wide variety of amenities in Dollis Hill, Willesden, Cricklewood and Brent Cross. The A5, A406 and M1 are also nearby allowing easy access in and out of London.

Features

- Three Bedrooms
- Family Bathroom
- Two Receptions
- Family Kitchen
- Off Street Parking
- Private Garden

Alder Grove, London, NW2



Total area (approx.): 102.0 sq. m (1,097.9 sq. ft)
Outbuildings (approx.): 23.8 sq. m (256.2 sq. ft)