



St. Michaels Road, NW2

£127,500

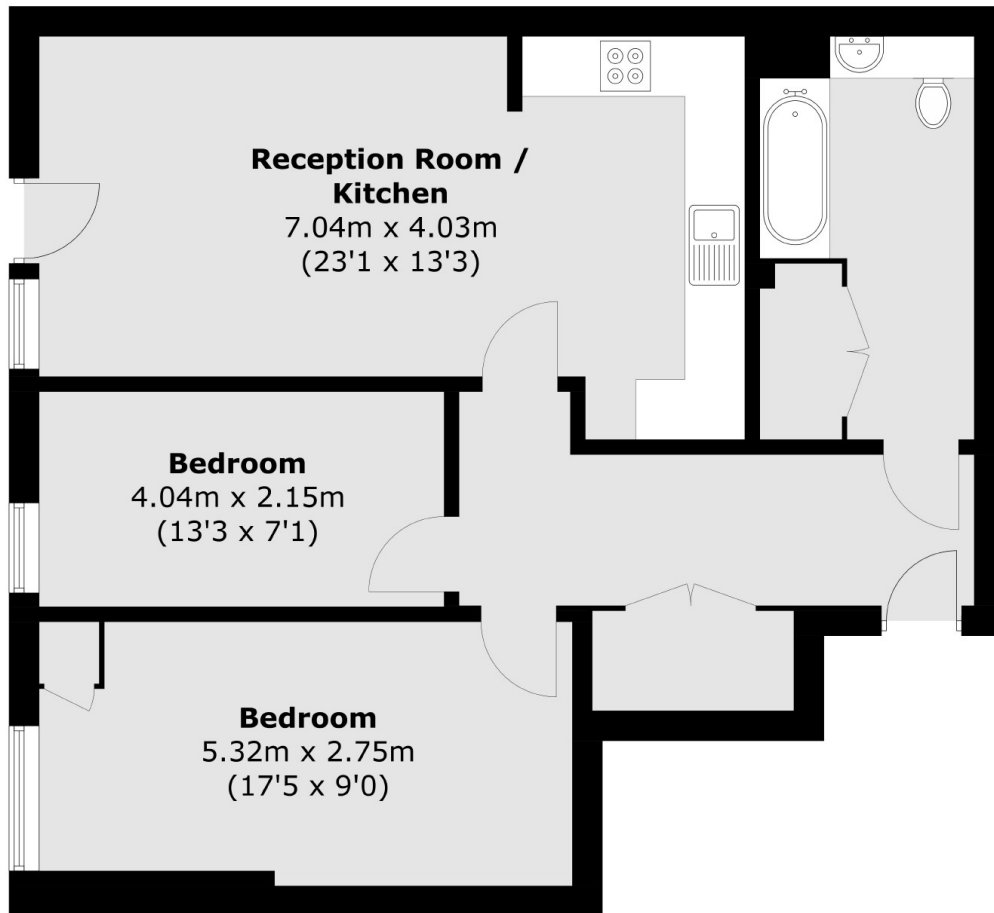
****SHARED OWNERSHIP**** A bright two double bedroom flat located on the ground floor of a beautifully presented new build offering an open plan living area with doors leading on to a private terrace, a family bathroom and all in excellent condition throughout.

Located just moments from the popular open space of Gladstone Park, and numerous transport links such as Willesden Green Station (Jubilee) and Cricklewood Station (Thameslink Railway) giving you quick access to the City in under 30 mins.

Features

- Two Double Bedrooms
- Allocated Off Street Parking
- Private Terrace
- Ground Floor
- Leasehold
- Open Plan Living Area

St. Michaels Road, London, NW2



Total area (approx.): 70.2 sq. m (755.6 sq. ft)