



Pine Road, NW2

£545,000

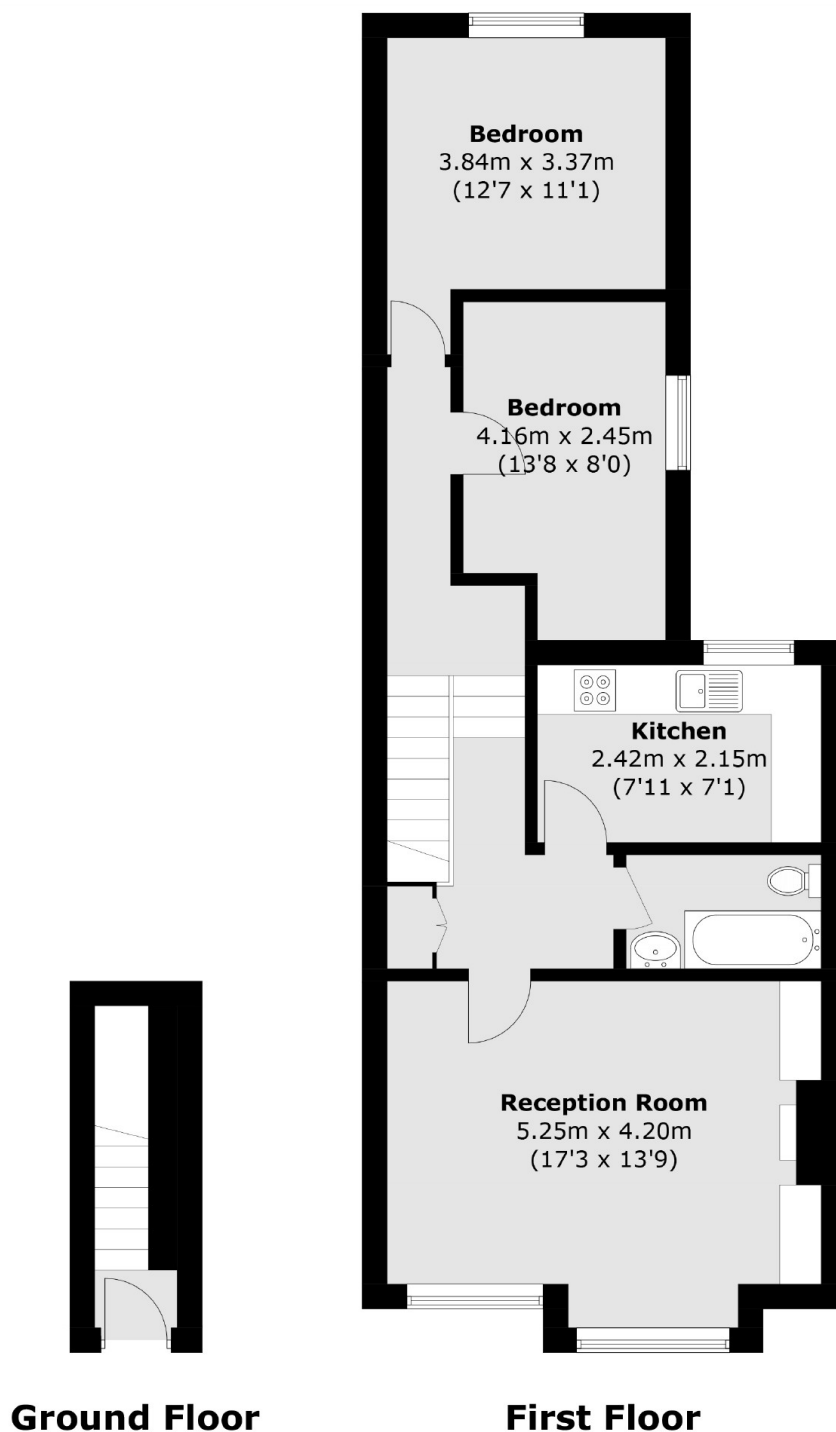
A two double bedroom first floor period conversion, measuring in excess of 750 Sq. Ft. With a well-fitted kitchen, separate reception room with exposed brick walls and a modern bathroom. The property comes with the potential to convert the loft space (subject to the usual permissions).

Pine Road is a tree-lined residential street conveniently located within easy reach of Cricklewood Thameslink Station with underground links from nearby Willesden Green providing good connections into Central London and the City.

Features

- Two Double Bedrooms
- First Floor
- Period Conversion
- Separate Reception Room
- Modern Kitchen
- Potential For Loft Conversion (STPP)

Pine Road, London, NW2



Total area (approx.): 70.1 sq. m (754.5 sq. ft)