



Chatsworth Road, NW2

£350,000

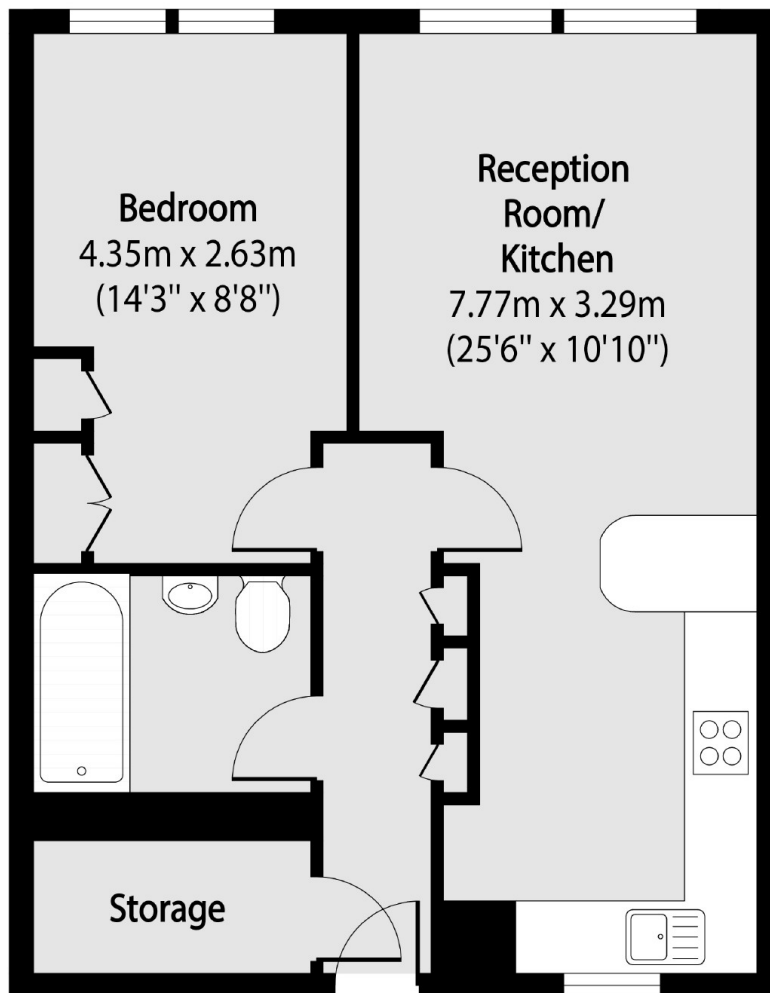
A one bedroom ground floor apartment with an open plan living area with well-fitted kitchen, modern bathroom, ample storage throughout and gated off-street parking.

Chatsworth Road is close to the trendy shops and bars of Kilburn High Road, the cafes and restaurants of Salusbury Road and is within easy reach of Kilburn Station (Jubilee Line) and Brondesbury Station (Overground) offering excellent access to the City.

Features

- Ground Floor
- Open Plan Living
- Ample Storage
- Modern Bathroom
- Gated Off Street Parking
- Close To Transport

Chatsworth Road, London, NW2



Total area (approx): 46.80 sq m (504 sq. ft)