



## Coles Green Road, NW2

£345,000

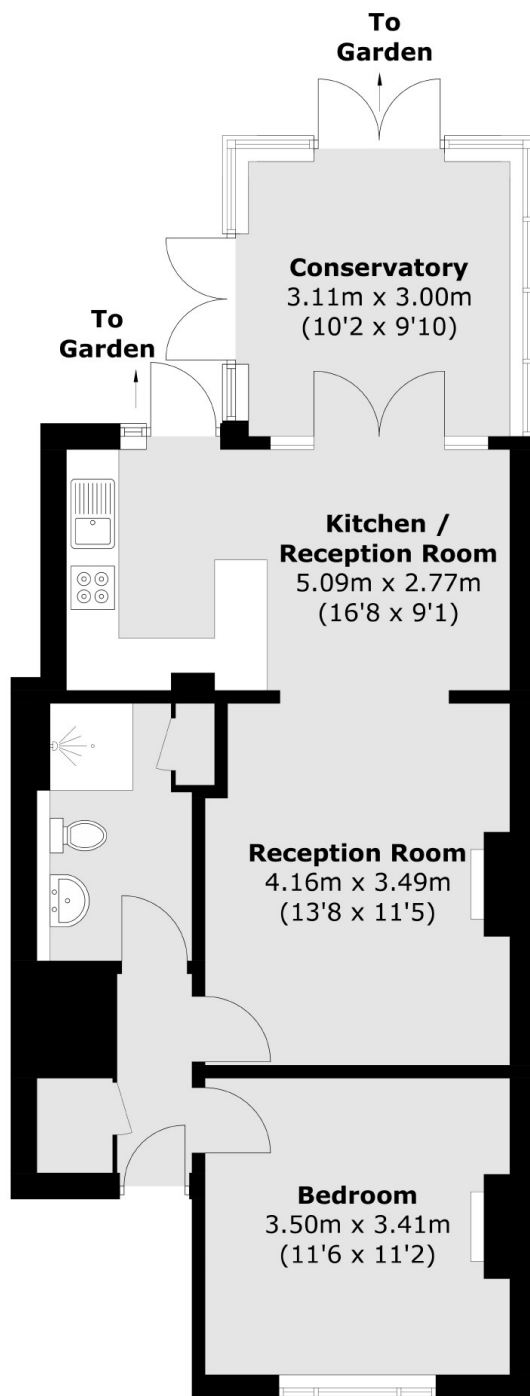
A large one bedroom ground floor conversion with an open plan living area with well-fitted kitchen, modern bathroom, ample storage throughout and access to a private garden. The property comes with a share of the freehold and no onward chain.

Coles Green Road is within a short distance of the new Brent Cross West station (Thameslink), Brent Cross Shopping Centre and multiple road connections (A406, A41, M1).

### Features

- Ground Floor
- Open Plan Living
- Ample Storage
- Modern Bathroom
- Private Garden
- No Onward Chain

# Coles Green Road, London, NW2



Total area (approx.): 62.9 sq. m (677.0 sq. ft)