



Huddleston Road, NW2

£479,000

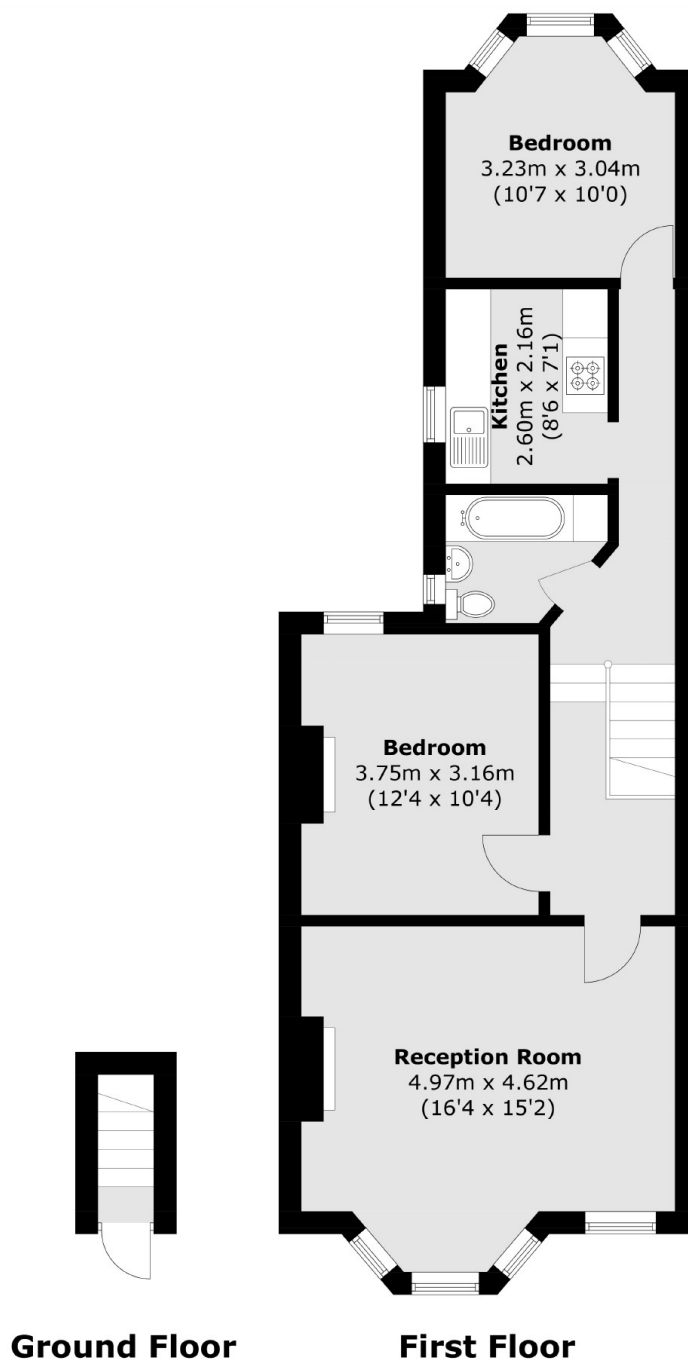
With high ceilings and original character throughout, this beautifully presented two bedroom flat is set on the first floor of a Victorian conversion. The flat benefits from a bright reception room, a separate kitchen, two double bedrooms and a three piece bathroom.

Huddleston Road is a quiet street close to Willesden Green and its great variety of cafes, shops and restaurants as well as transport links including Jubilee line tube stations and numerous bus routes.

Features

- Two Double Bedrooms
- First Floor Flat
- Close To Amenities
- Chain Free
- Leasehold
- Potential to Extend (STPP)

Huddlestone Road, London, NW2



Total area (approx.): 64.8 sq. m (697.4 sq. ft)