



## St. Gabriels Road, NW2

£623 Per week

This three bedroom, top floor flat is ideally situated in the Mapesbury Estate. The flat has an open plan living area with an integrated kitchen, well sized bedrooms with built in storage, a family bathroom with separate bath and shower and part wood flooring.

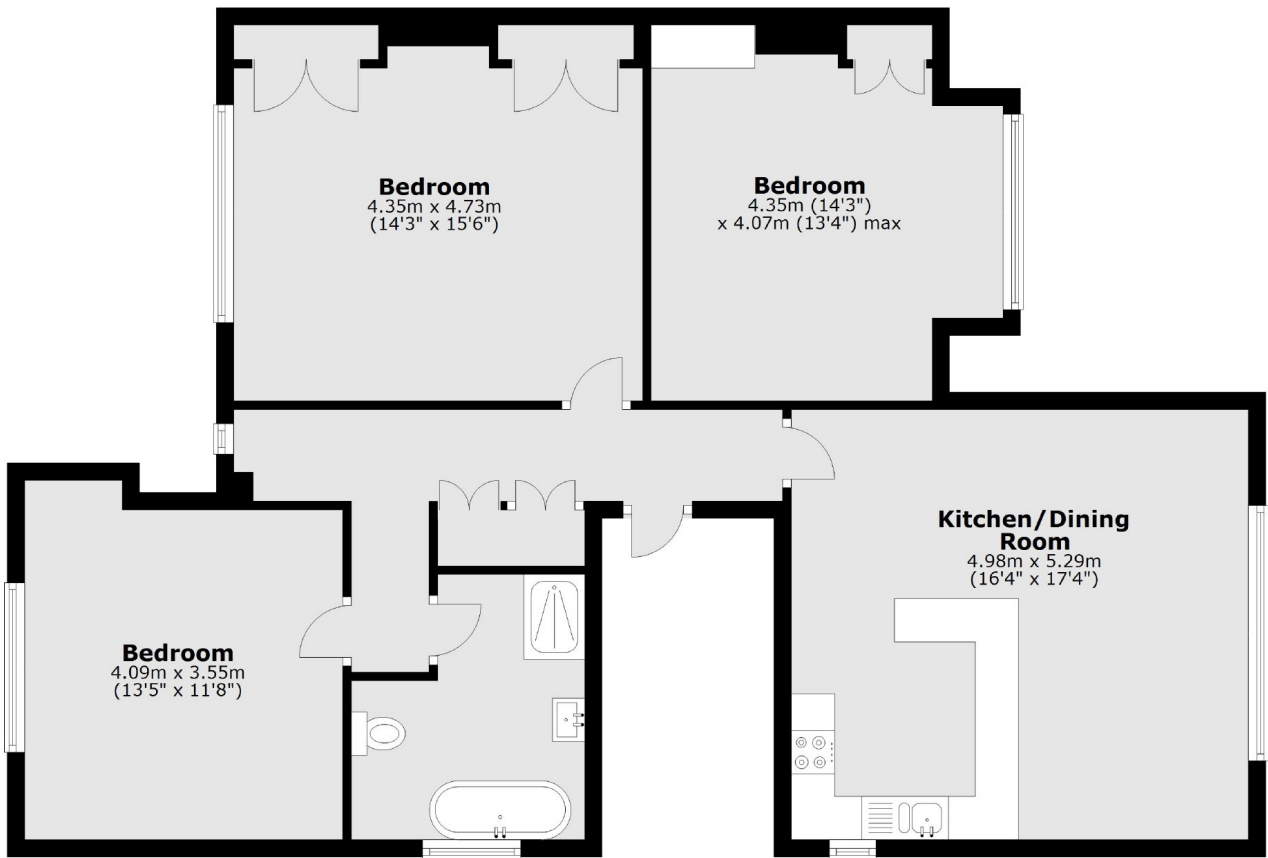
St. Gabriels Road is well situated for Willesden Green and Kilburn high streets with many boutique cafés, restaurants and local amenities. Willesden Green, Kilburn stations (Jubilee Line) and many bus services are also on your doorstep.

### Features

- Three Bedrooms
- Open Plan
- Tiled Bathroom
- Excellent Storage
- Wood Floors
- Ideally Situated

# St. Gabriels Road, London, NW2

## First Floor



Total area: approx. 95.9 sq. metres (1032.2 sq. feet)