



Draycott Close, NW2

£368 Per week

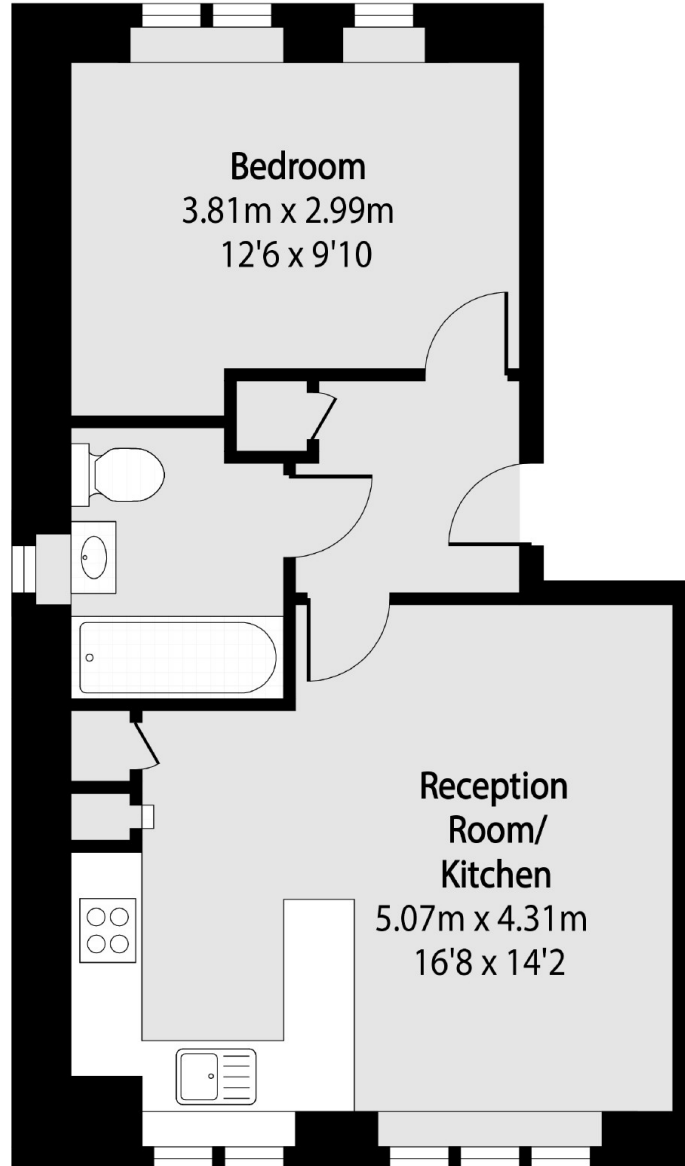
This spacious ground floor flat in Cricklewood is in a purpose built block with an open plan living area with a integrated kitchen, a double bedroom with good storage, off street parking on a first come first serve basis and well maintained communal grounds.

Draycott Close is well located close to Cricklewood Station (Thameslink), Cricklewood Broadway with a range of local amenities, restaurants, cafés, Brent Cross and excellent transport and motorway links.

Features

- One Bedroom
- Open Plan
- Tiled Bathroom
- Wood Floors
- Communal Grounds
- Cricklewood Station

Draycott Close, London, NW2



Total area (approx): 39.23 sq m (422 sq. ft)