



## Prout Grove, NW10

£715 Per week

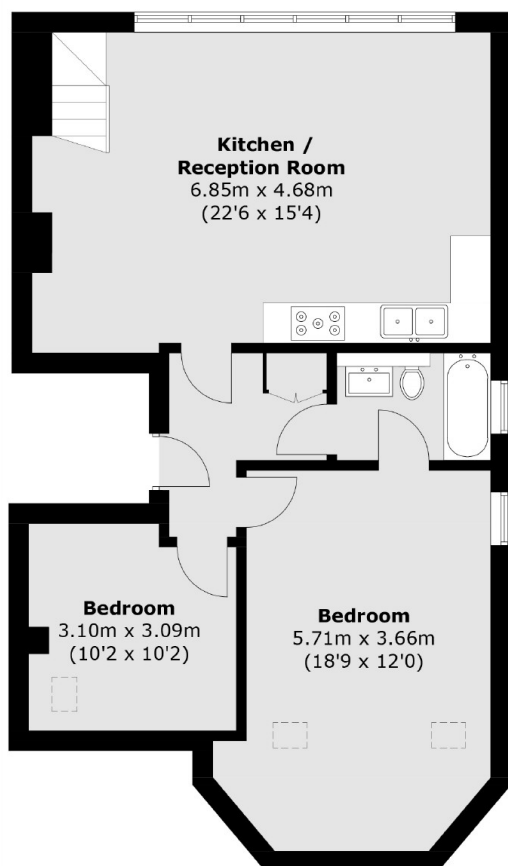
Spread over two floors this renovated period conversion is bright and spacious with excellent entertainment space. The property has a open plan living area with a integrated kitchen and high ceilings, primary bedroom suite, two further bedrooms and good storage space.

Prout Grove is ideally located for all local amenities found on Willesden High road with the open spaces of Gladstone Park also nearby. Neasden (Jubilee Line) is the closest station for direct links around the city.

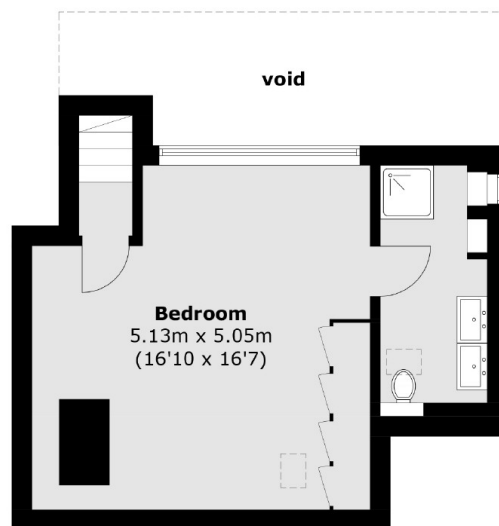
### Features

- Three Bedrooms
- Open Plan
- Integrated Kitchen
- Two Bathrooms
- Period Renovation
- Split Level

# Prout Grove, London, NW10



**Second Floor**



**Third Floor**

Total area (approx.): 105.4 sq. m (1,134.5 sq. ft)