



Windsor Road, NW2

£830 Per week

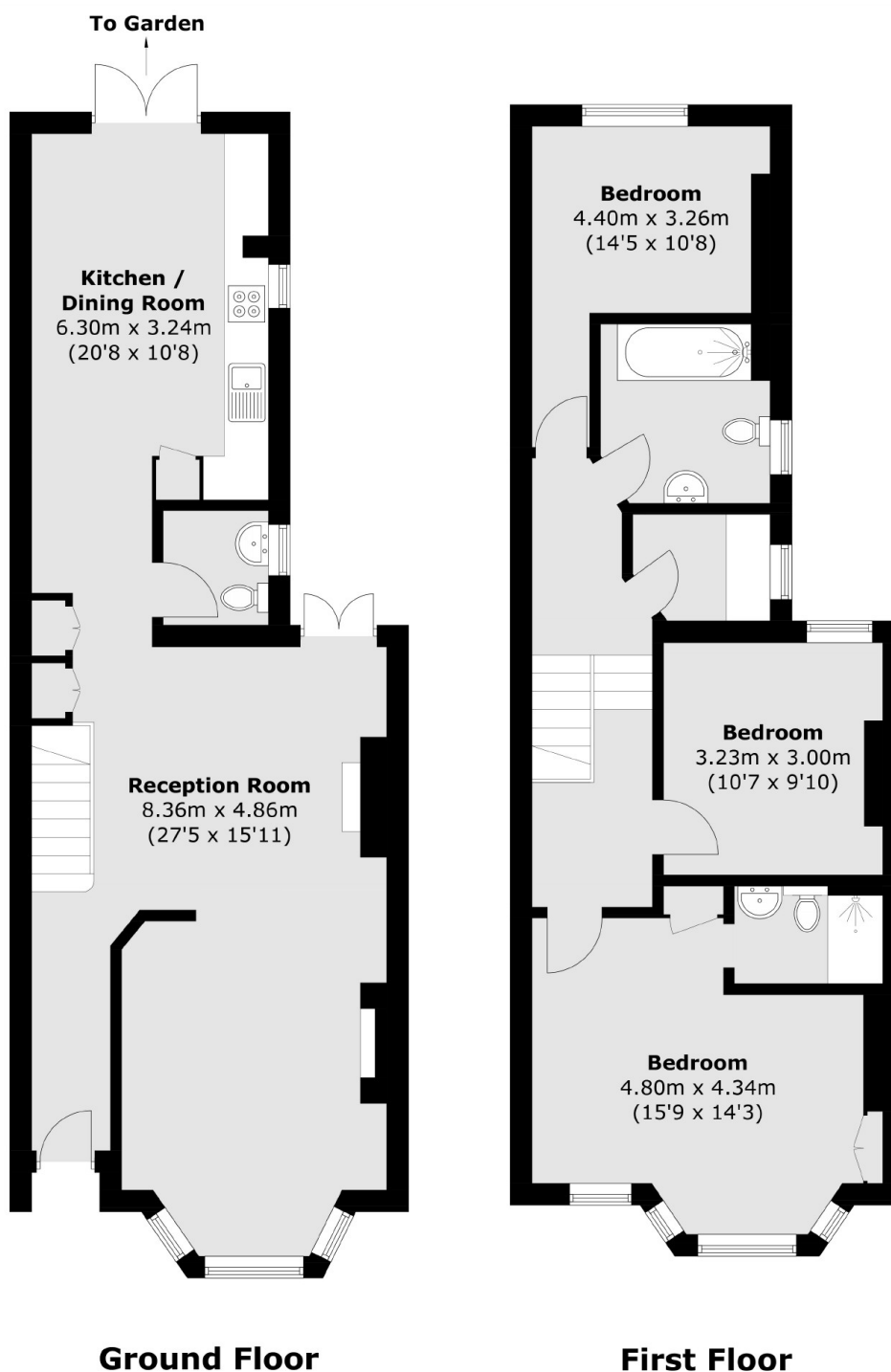
This split-level three bedroom, two bathroom, first floor maisonette is ideally situated in Willesden Green. Spread over two floors, the property has a spacious reception, two double bedrooms, good storage space and a separate eat-in kitchen with direct access to a private patio garden.

Windsor Road is ideally situated close to local amenities and transport links. Willesden Green station and high street is moments away with many restaurants and coffee shops nearby, you also have Dollis Hill station close by.

Features

- Three Bedrooms
- Spacious Reception
- Eat-in Kitchen
- Private Garden
- Good Storage
- Willesden Green

Windsor Road, London, NW2



Total area (approx.): 120.9 sq. m (1,301.4 sq. ft)