

Pine Road, NW2

£865 Per week

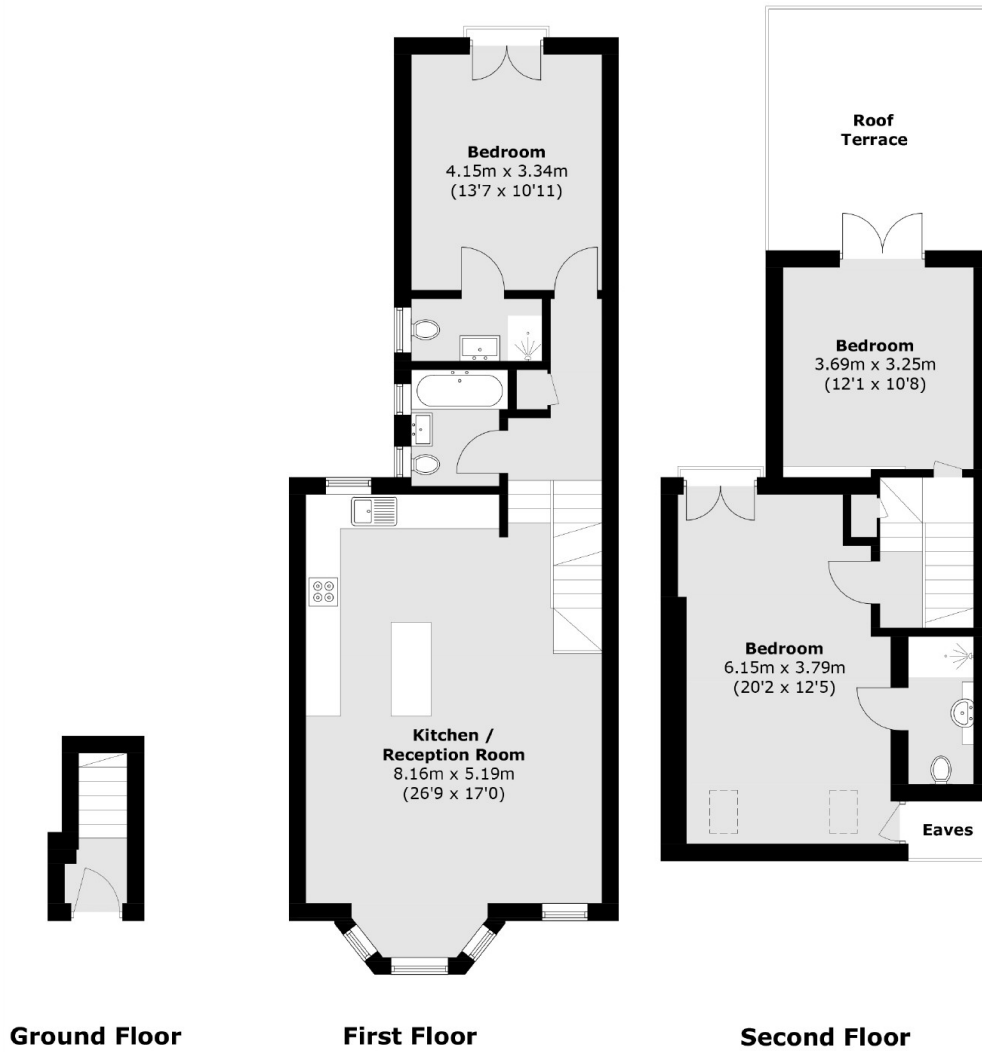
This newly renovated three bedroom, three bathroom, split-level period conversion is ideally located with Gladstone Park nearby. Spread over two floors the property has a bright open plan reception with a modern integrated Island kitchen, three well sized double bedrooms, two en-suite shower rooms, a tiled family bathroom and a private terrace perfect for entertaining.

Pine Road is conveniently located within easy reach of Cricklewood Thameslink and Willesden Green stations, providing good connections into Central London and the City. You also have numerous bus routes linking the surrounding areas and the A1, M1 and A406 all nearby.

Features

- Three Double Bedrooms
- Three Bathrooms
- Open Plan Reception
- Integrated Island Kitchen
- Split-Level
- Private Terrace

Pine Road,
London, NW2



Total area (approx.): 111.8 sq. m (1,203.4 sq. ft)
(Excluding Eaves)

Roof Terrace: 16.4 sq. m (176.5 sq. ft)