



Woodley Crescent, NW2

£650,000

Situated within a modern development this three bedroom flat is in great condition throughout. It has a large reception room with access to a balcony, separate kitchen, two bathrooms (one en suite) underground parking and communal gardens.

The location offers easy access to local amenities, shops, restaurants, and public transportation links found along Cricklewood Lane and Cricklewood Broadway. David Lloyds Gym is on the ground floor of the development.

Features

- Three Bedrooms
- Two Bathrooms
- Balcony
- Close to Transport
- Video Entry System
- Lift Access



Woodley Crescent, NW2

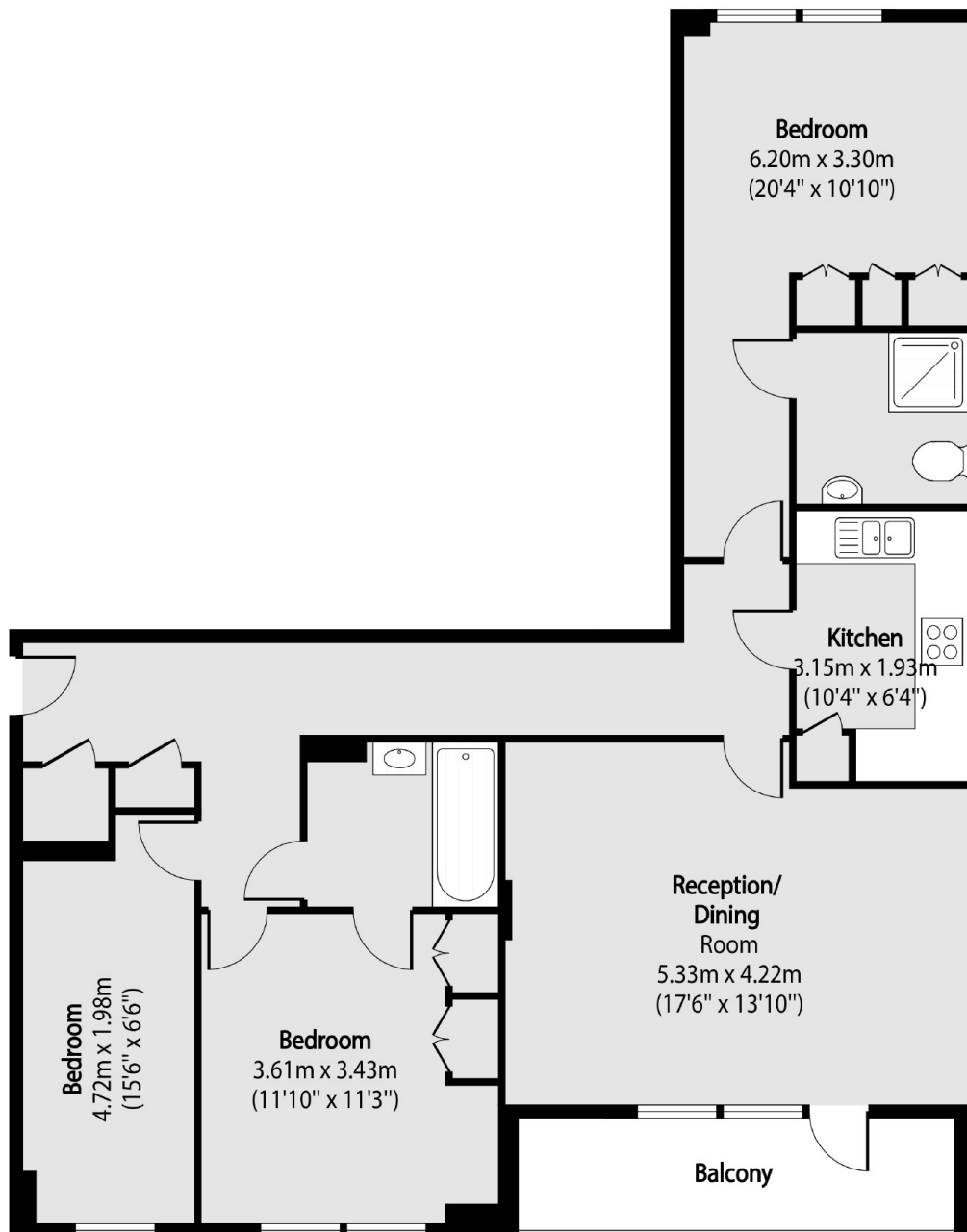
As you enter you are greeted by an entrance hallway that leads to the heart of the flat. The reception room is flooded with natural light courtesy of large windows and door that offers access to a sizeable balcony with great views of the surrounding cityscape. The kitchen has integrated appliances, stylish cabinetry and ample counter space.

The principal bedroom features floor-to-ceiling windows with views over the communal gardens, an en suite bathroom designed with contemporary fixtures and a walk-in shower. The remaining two bedrooms have plenty of space for a comfortable bed and storage. They share a family bathroom complete with a bathtub.

Coleby House provides its residents with a range of benefits from a dedicated underground parking space to secure video entry and a communal garden.



Woodley Crescent, London, NW2



Total area (approx): 88.82 sq m (956 sq. ft)

Balcony total area (approx): 16.50 sq m (70 sq. ft)