



## Woodvale Way, NW11

£369 Per week

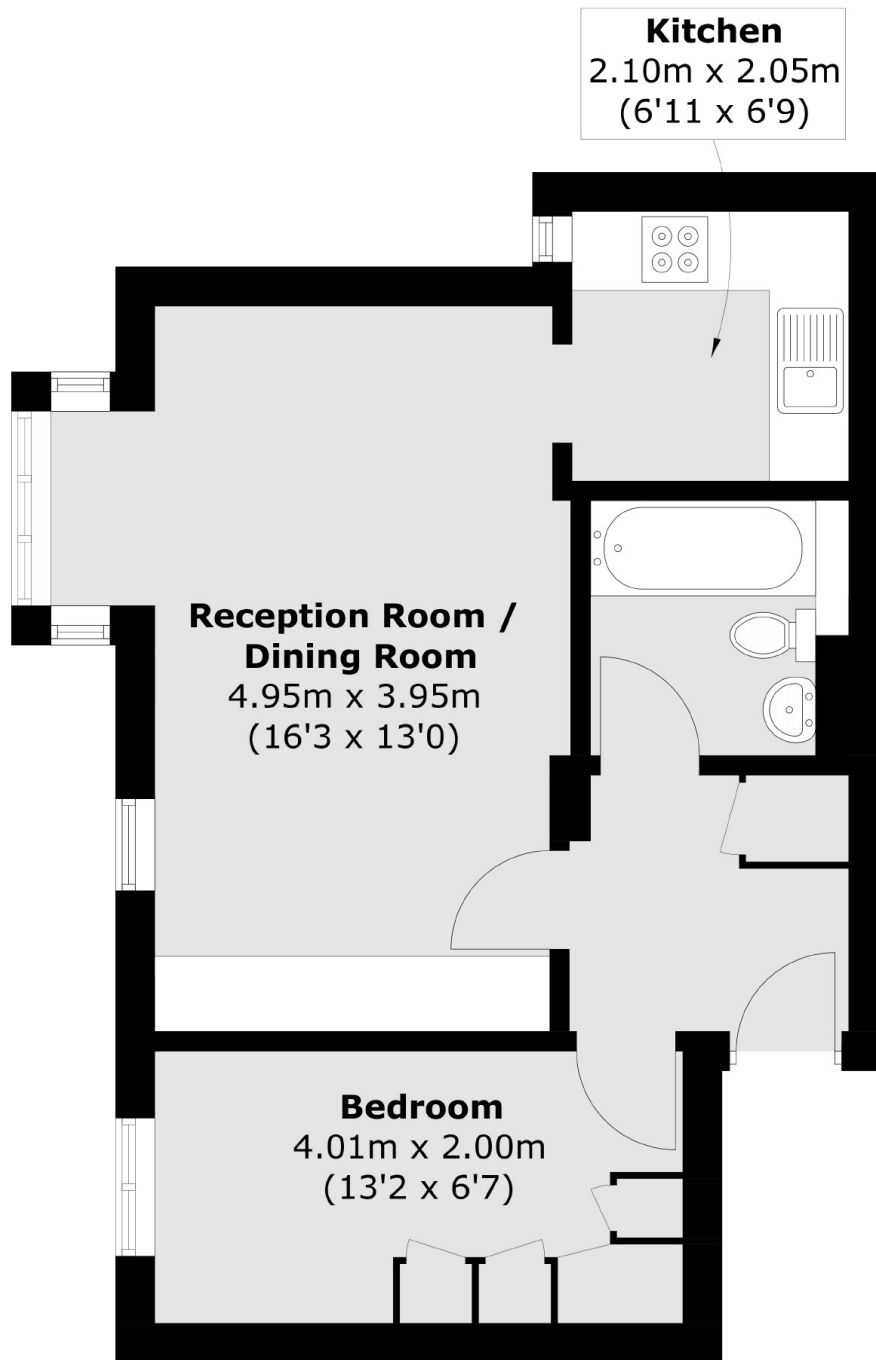
This spacious first floor flat is in a purpose built block with water included, a spacious living area, a separate fitted kitchen, a double bedroom with good storage, tiled bathroom, allocated off street parking and well maintained communal grounds.

Woodvale Way is well located close to Cricklewood Station (Thameslink), Cricklewood Broadway with a range of local amenities, restaurants, cafés, Brent Cross and excellent transport and motorway links.

### Features

- Spacious Reception
- Separate Kitchen
- Tiled Bathroom
- Off Street Parking
- Close to Local Amenities
- Communal Grounds

# Woodvale Way, London, NW11



Total area (approx.): 40.8 sq. m (439.2 sq. ft)