



## Rutland Park, NW2

£507 Per week

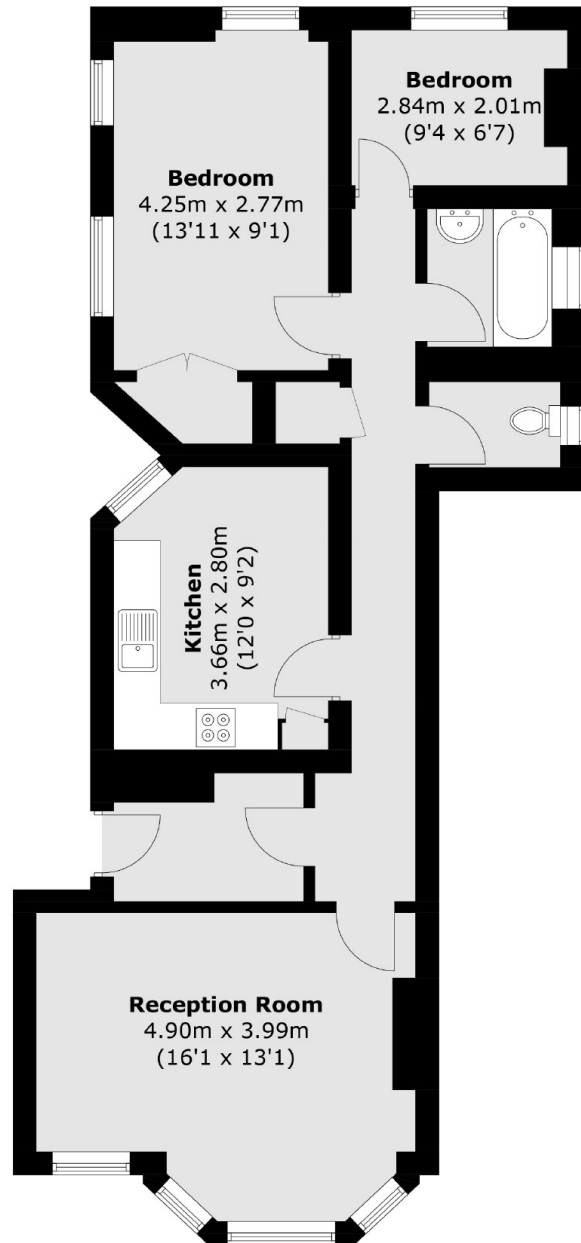
This two bedroom first floor flat is ideally situated in Willesden Green with many local amenities on the doorstep. The property has a spacious reception room, a separate eat-in kitchen, two well-sized bedrooms, a tiled bathroom with bath and a separate WC.

Rutland Park is well situated for Willesden Green and Kilburn High Streets which have many boutique cafés, restaurants and local amenities. Willesden Green, Kilburn stations (Jubilee Line) and Brondesbury (Overground) are also on your doorstep.

### Features

- Two Bedrooms
- Spacious Reception
- Separate Kitchen
- Family Bathroom
- Separate WC
- Ideally Situated

# Rutland Park, London, NW2



Total area (approx.): 72.2 sq. m ( 777.1 sq. ft)