



Teignmouth Road, NW2

£825,000

This generously sized split-level first floor flat offers three double bedrooms all with en-suites, an additional guest WC, a separate kitchen/diner ideal for entertaining and a separate reception. The flat has high ceilings throughout and access to a large private garden.

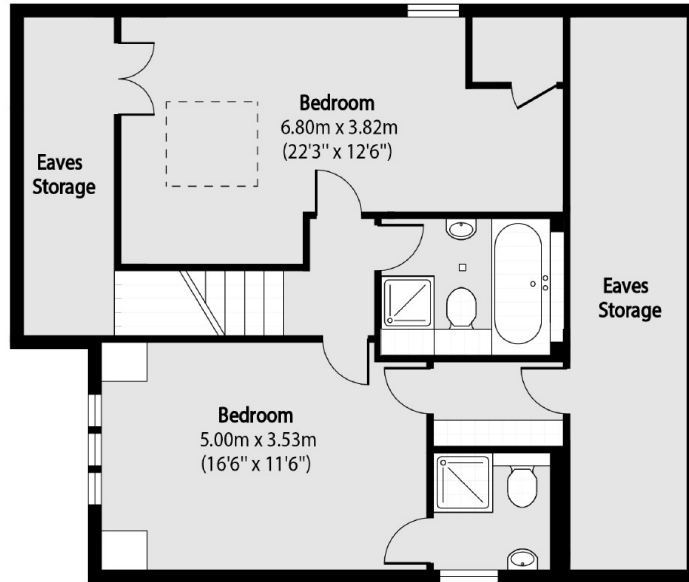
Teignmouth Road is situated within the desirable Mapesbury Conservation Area with Kilburn Station (Jubilee Line Zone 2) and Brondesbury Station (Overground) just 0.4 miles away.

Features

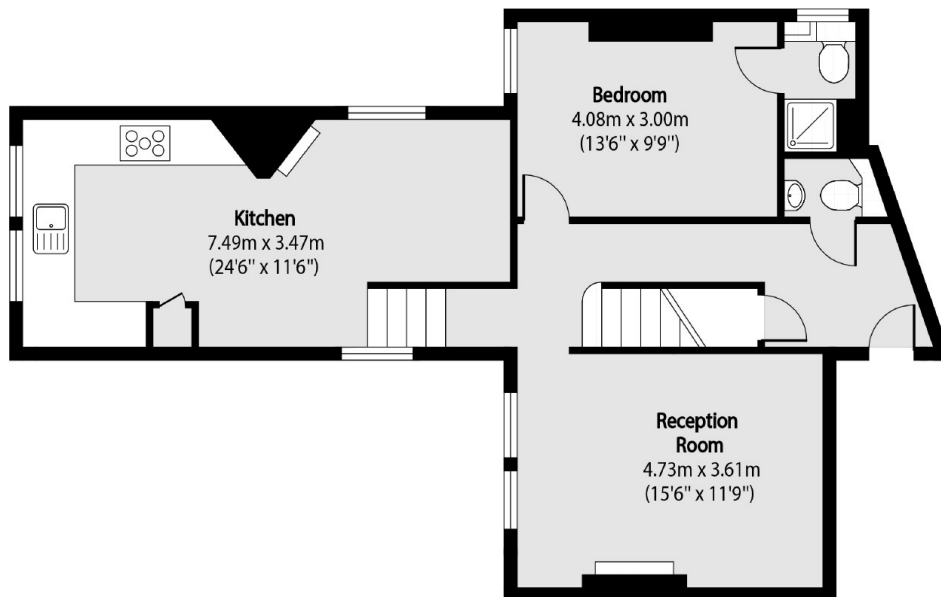
- Three Bedrooms
- Three Bathrooms
- Top Floor Flat
- Private Garden
- Off Street Parking
- Chain Free

Teignmouth Road, London, NW2

Second Floor



First Floor



Total area (approx): 130.50 sq m (1405sq. ft)