



Chatsworth Road, NW2

£1,384 Per week

This detached Edwardian family home is ideally situated on the borders of the Mapesbury Estate and Willesden Green. The house has five well sized bedrooms, two bathrooms, two large reception rooms, a separate family kitchen with utility room and a large private rear garden.

Chatsworth Road is well situated for Willesden Green and Kilburn high streets which have many boutique cafés, restaurants and local amenities. Willesden Green, Kilburn stations (Jubilee Line) and Brondesbury (Overground) are also on your doorstep.

Features

- Five Bedrooms
- Two Reception Rooms
- Two Bathrooms
- Family Kitchen
- Off Street Parking
- Large Private Garden



Chatsworth Road, NW2

Located on borders of the Mapesbury Estate and Willesden Green, this family home is spread over two floors offering excellent family and entertainment space.

The ground floor has a welcoming entrance, with two large reception rooms, one located at the rear of the property with doors opening on to the private rear garden.

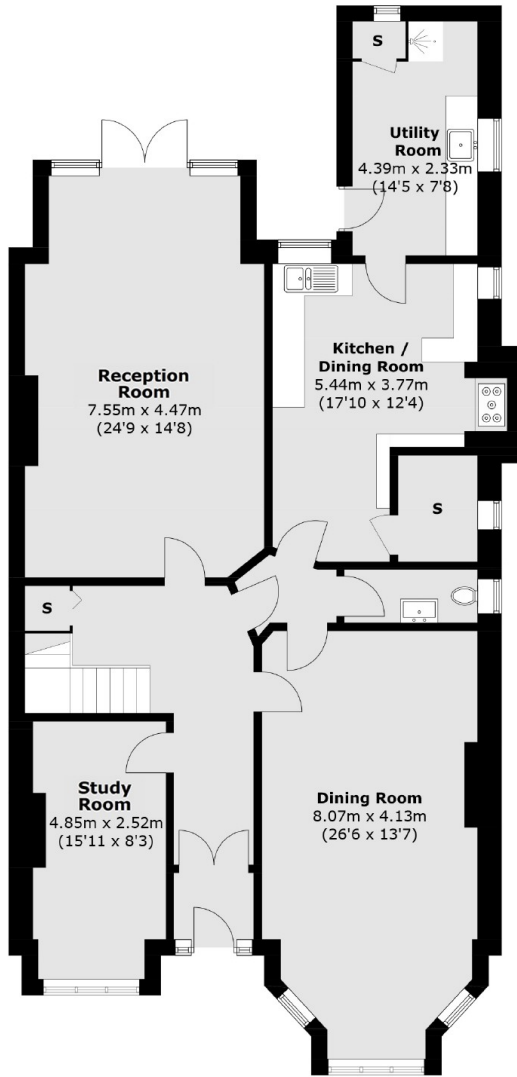
You also have a further room on the ground floor which is perfect for study or play area, a guest cloakroom and a separate family kitchen with great storage space and a utility room.

On the first floor you have a large primary bedroom with a walk-in wardrobe and en-suite shower room, three double bedrooms with storage space and a further bedroom. The family bathroom is also on this floor with a free standing roll top bath and separate shower.

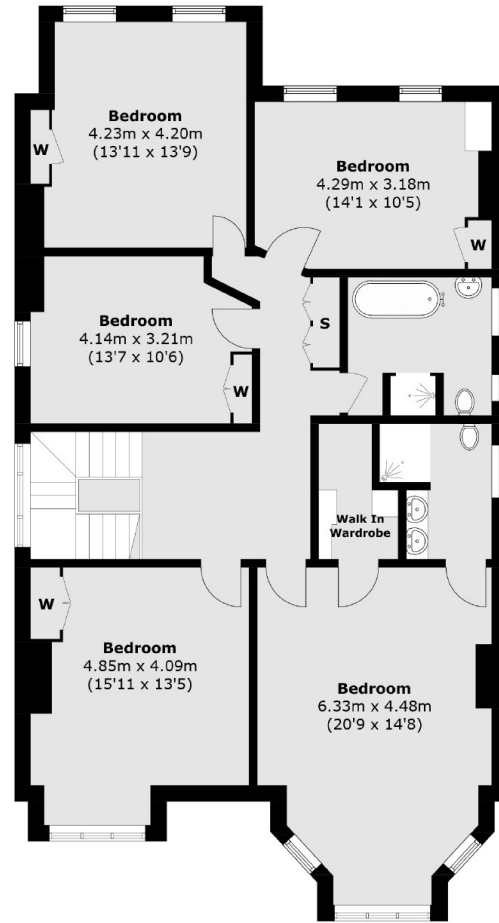
Many period features have been retained in the house including seven fireplaces, tiled flooring, restored hardwood floors and cornices.



Chatsworth Road,
London, NW2



Ground Floor



First Floor

Total area (approx.): 257.1 sq. m (2,767.3 sq. ft)