



## Cotswold Gardens, NW2

£775,000

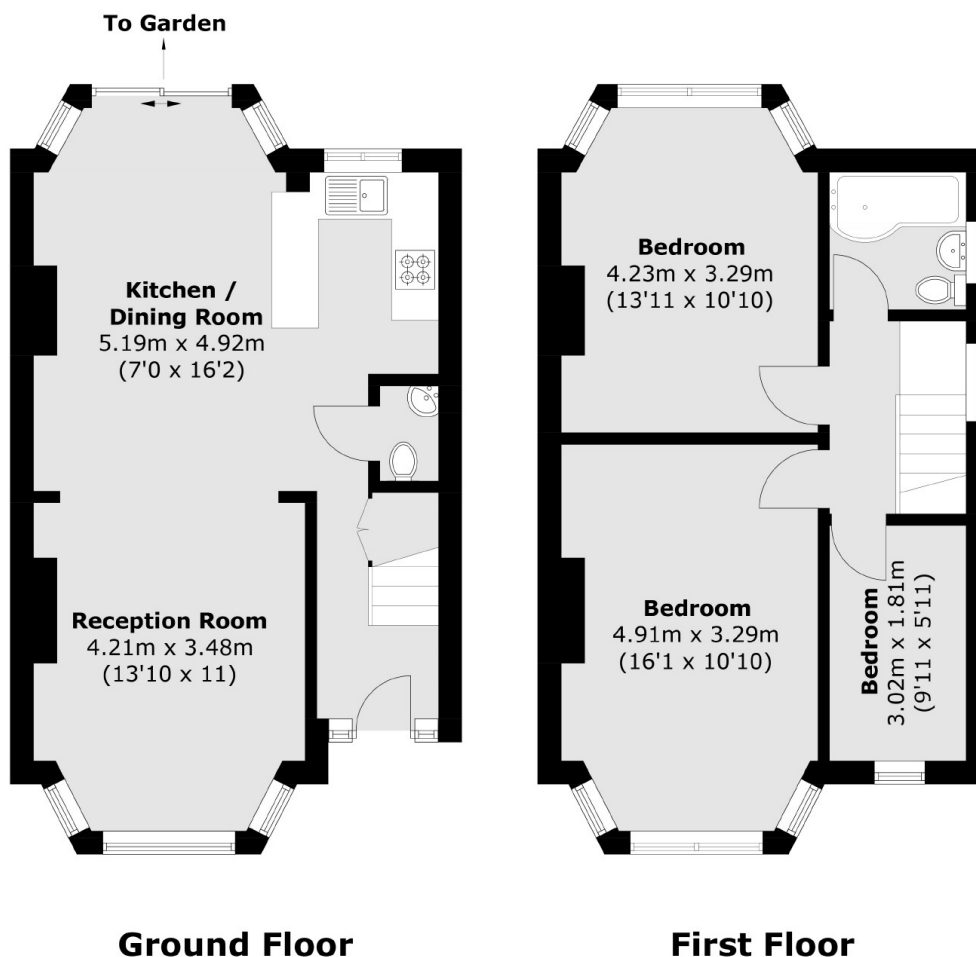
A semi-detached house situated in the desirable Golders Green Estate boasting three bedrooms, family bathroom, a double reception, open plan on to the modern kitchen leading out on to a south facing garden. The property comes with garage, off-street parking and no onward chain.

Cotswold Gardens is situated within the favourable Golders Green Estate; a very family orientated residential area. Local transport links include Cricklewood (Thameslink) station, the new Brent Cross West station and numerous bus routes.

### Features

- Three Bedrooms
- Double Reception Room
- South Facing Garden
- Garage And Parking
- Potential to Extend (STPP)
- No Onward Chain

# Cotswold Gardens, London, NW2



Total area (approx.): 86.3 sq. m (928.9 sq. ft)