



Manstone Road, NW2

£395,000

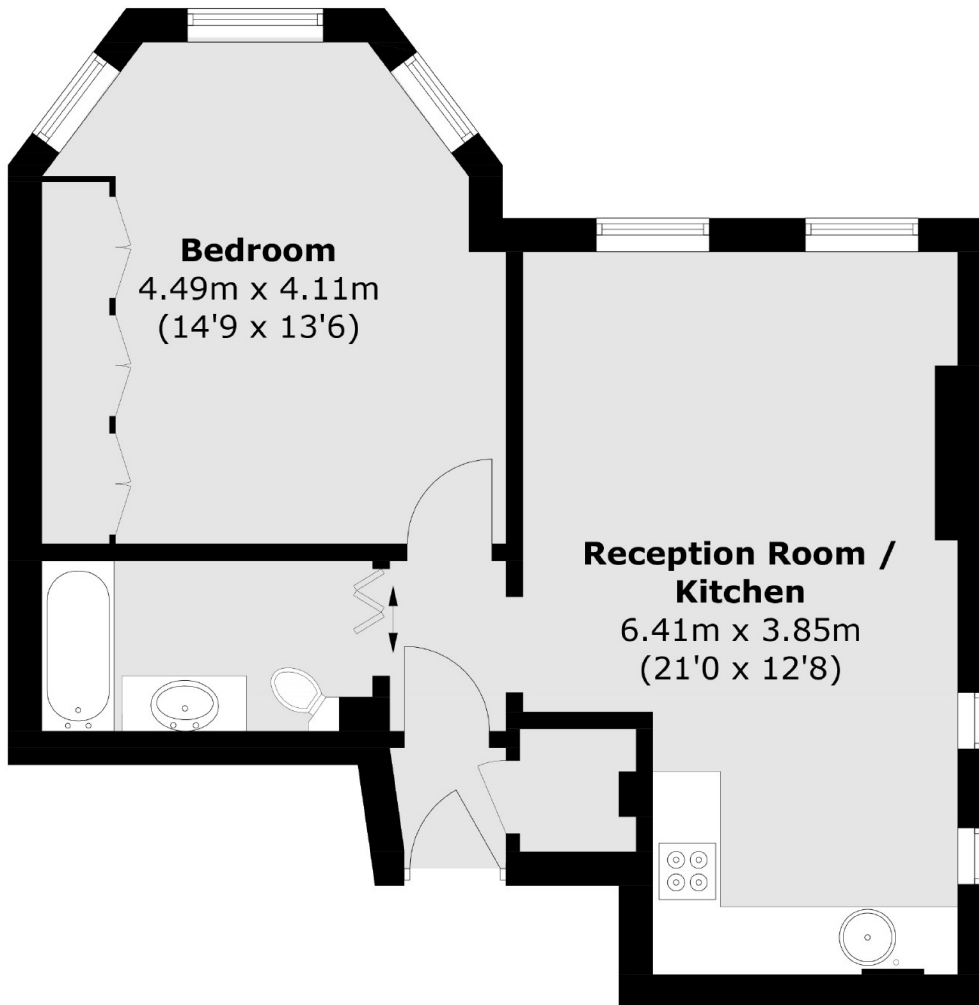
A first floor period conversion with high ceilings throughout and offering bright and spacious accommodation in excess of 500 sq.ft. With an open plan living area, double bedroom and bathroom. The property comes with a newly extended lease and no onward chain.

Manstone Road is ideally located a short distance from West Hampstead with its variety of desirable local amenities. Kilburn Station (Jubilee Line) and Cricklewood (Thameslink) Station are both within 0.5 miles away.

Features

- Period Conversion
- Open Plan Living Area
- First Floor
- In Excess Of 500 Sq.Ft.
- Newly Extended Lease
- No Onward Chain

Manstone Road, London, NW2



Total area (approx.): 48.8 sq. m (525.3 sq. ft)