



Shoot Up Hill, NW2

£475,000

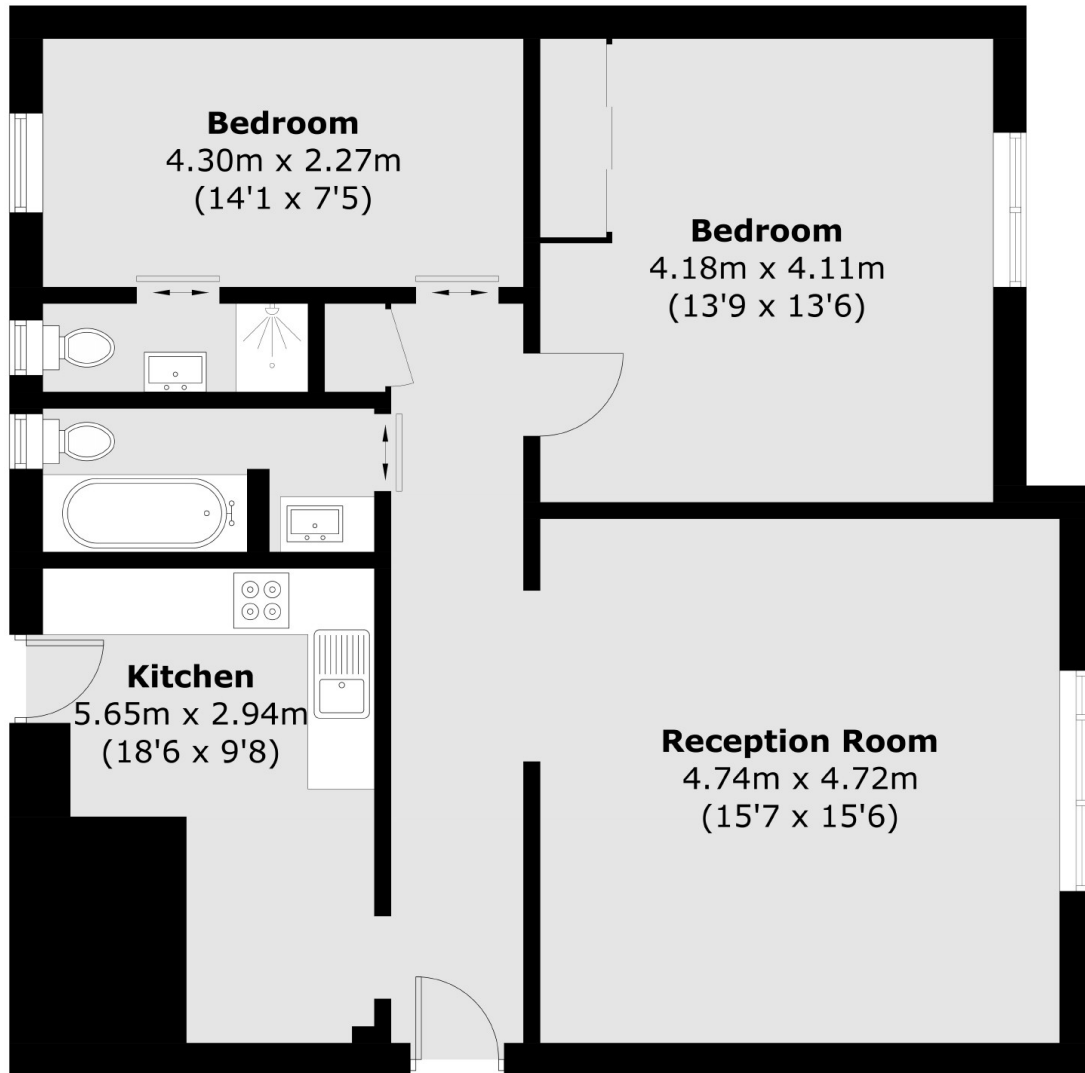
Situated on the top floor of this well-regarded purpose built block is this two double bedroom, two bathroom flat with a separate kitchen, spacious reception room and ample storage. The flat is located on the fifth floor with lift access and comes with access to communal gardens, off-street parking, a garage and no onward chain.

Wiltern Court is close to the trendy shops and bars of West End Lane and is within easy reach of Kilburn station (Jubilee Line) and Brondesbury station (Overground) offering excellent access to the City.

Features

- Two Double Bedrooms
- No Onward Chain
- Top Floor With Lift Access
- Separate Kitchen
- Newly Extended Lease
- Off Street Parking And Garage

Shoot Up Hill, London, NW2



Total area (approx.): 78.5 sq. m (845.0 sq. ft)