



## Chatsworth Road, NW2

£1,250,000

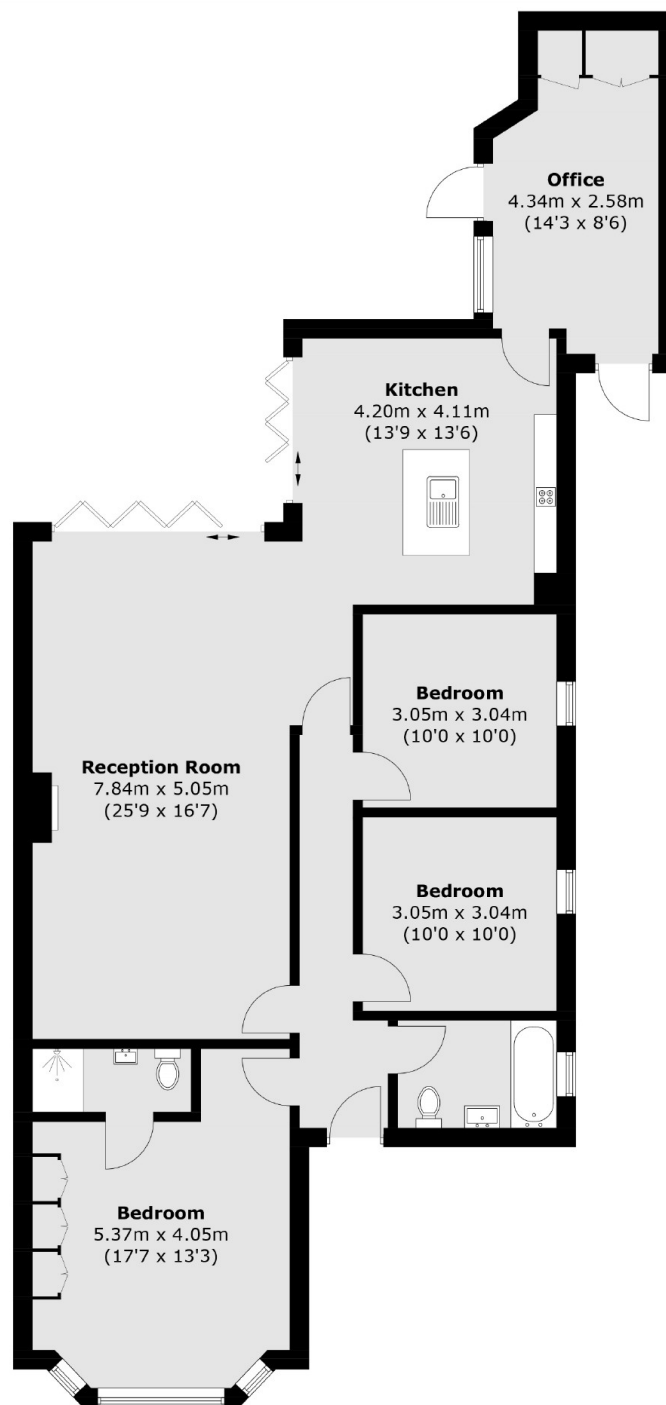
A fully renovated ground floor apartment measuring in excess of 1250 sq.ft. With three double bedrooms, two bathrooms, an open plan living area, with well-fitted kitchen and a separate office. The property comes with off-street parking, access to a large private garden, the freehold to the building and no onward chain.

Chatsworth Road is ideally situated close to Willesden Green, with its many local amenities, deli's, shops and cafés. Willesden Green station is moments away and Cricklewood Thameslink is also near, offering good transport links to the city and easy motorway access.

### Features

- Ground Floor Flat
- Three Bedrooms
- Open Plan Living Area
- Off-Street Parking
- Large Private Garden
- No Onward Chain

# Chatsworth Road, London, NW2



Total area (approx.): 118.2 sq. m (1,272.3 sq. ft)