



## Mapesbury Road, NW2

£369,950

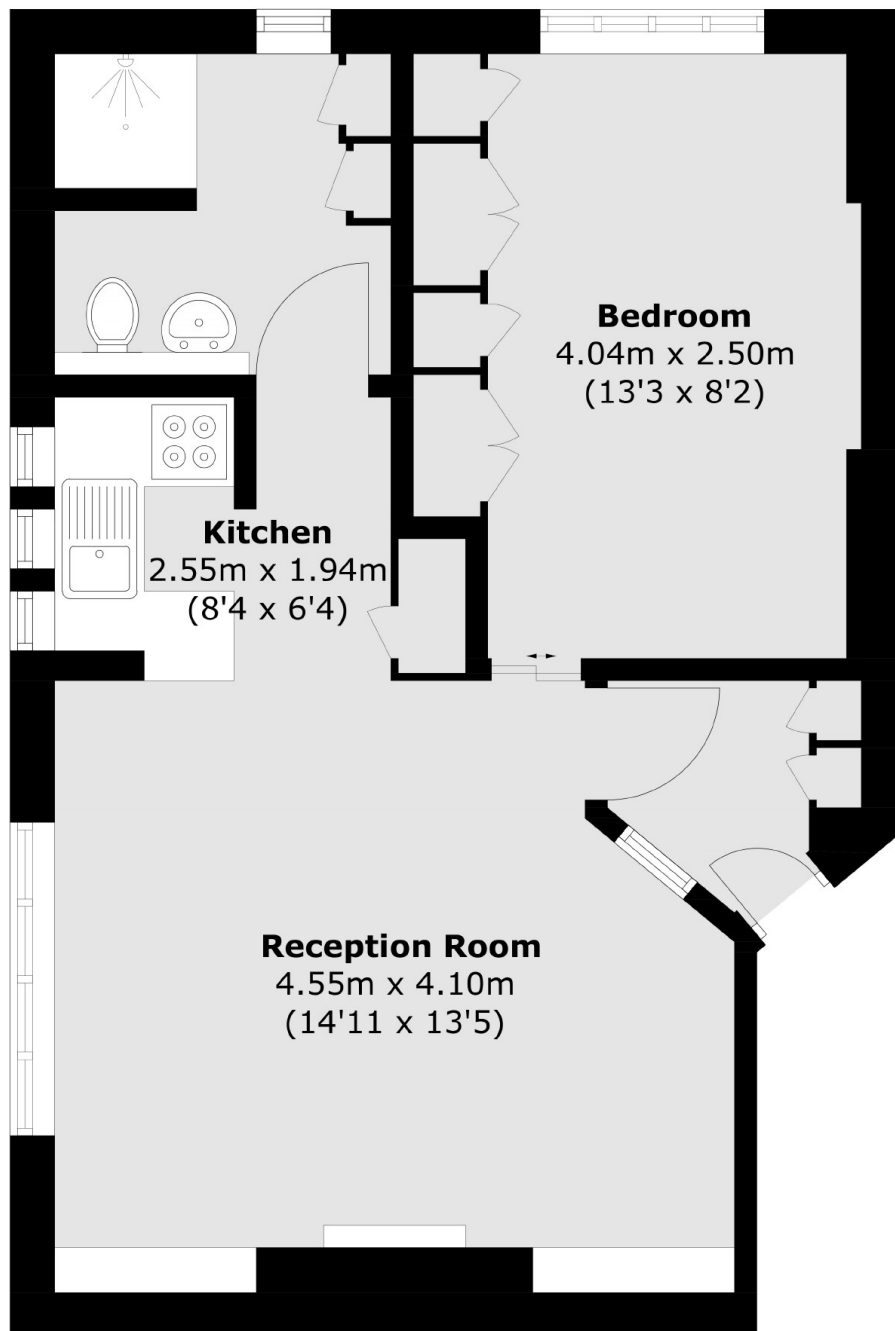
Situated on the ground floor of a well-maintained purpose built building and offered with no onward chain, this well-proportioned flat offers a double bedroom, open plan living area and modern shower room. The property comes with ample storage and access to communal gardens.

Thanet Lodge is located in the favourable Brondesbury Park and is just a short distance from Kilburn (Jubilee Zone 2), Brondesbury (Overground) and Queens Park (Bakerloo Zone 2) Stations. Kilburn and Queens Park both offer a range of shops, cafes and restaurants.

### Features

- One Bedroom
- Open Plan
- Ground Floor Flat
- No Onward Chain
- Leasehold
- Great Location

Mapesbury Road,  
London, NW2



Total area (approx.): 42.4 sq. m (456.4 sq. ft)