



Oman Avenue, NW2

£325,000

This one bedroom flat offers incredible views of the ever-popular Gladstone Park, a separate kitchen and a bright reception, all in good condition, making it a perfect first time buy or as an investment.

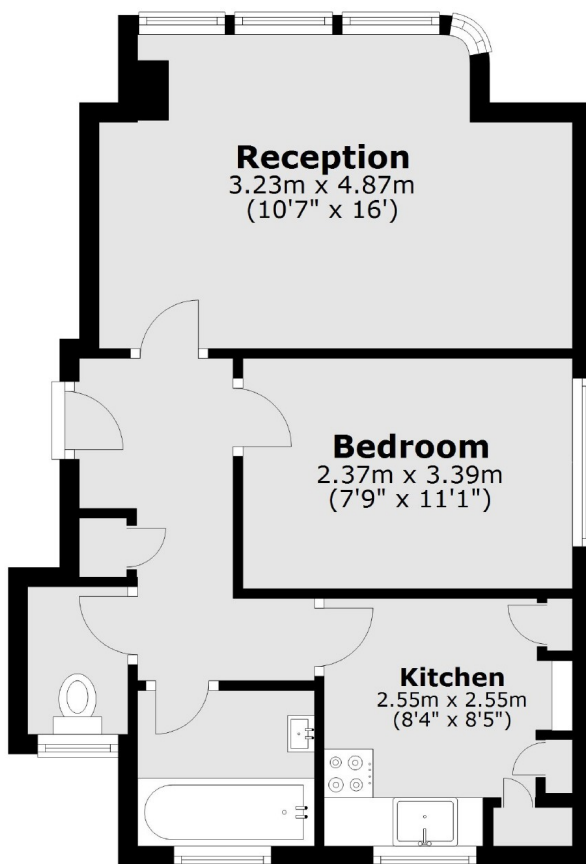
Oman Avenue is situated alongside the 86 acres of green open spaces of Gladstone Park. Both Dollis Hill & Willesden Green stations (Jubilee line) are nearby as well as the vast range of amenities of Walm Lane & Cricklewood Broadway.

Features

- One Bedroom
- Separate Kitchen
- Second Floor
- Gladstone Park Views
- Leasehold
- Chain Free

Oman Avenue,
London, NW2

Second Floor



Total area: approx. 40.4 sq. metres (435.3 sq. feet)

Dexters

Cricklewood
28-30 Cricklewood Broadway
London
NW2 3HD
Sales
020 7794 7710

Energy Rating: C. We aim to make our particulars both accurate and reliable. However they are not guaranteed; nor do they form part of an offer or contract. If you require clarification on any points then please contact us, especially if you're traveling some distance to view. Please note that appliances and heating systems have not been tested and therefore no warranties can be given as to their good working order.

 **RICS** | Regulated
Estate Agent
and Letting Agent

dexters.co.uk