



Oman Avenue, NW2

£350,000

This one bedroom flat offers incredible views of the ever-popular Gladstone Park, a separate kitchen and a bright reception, all in good condition, making it a perfect first time buy or as an investment.

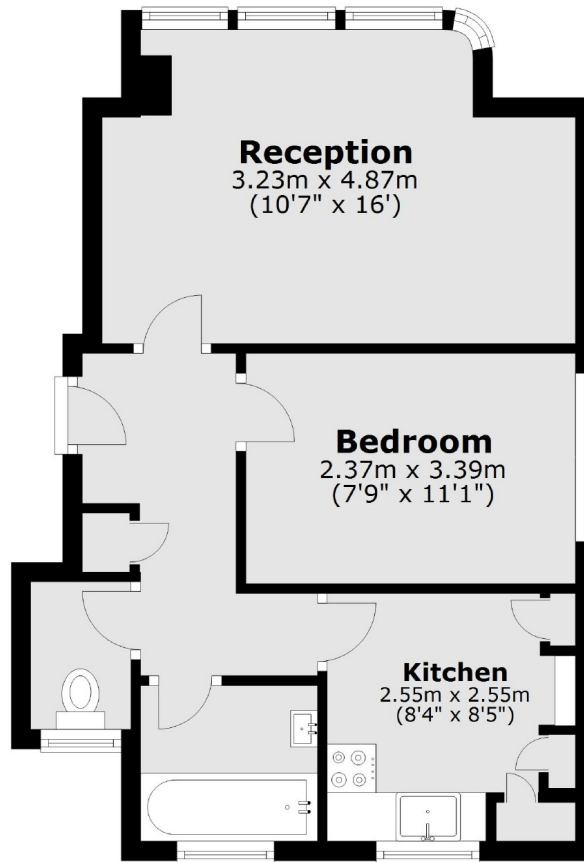
Oman Avenue is situated alongside the 86 acres of green open spaces of Gladstone Park. Both Dollis Hill & Willesden Green stations (Jubilee line) are nearby as well as the vast range of amenities of Walm Lane & Cricklewood Broadway.

Features

- One Bedroom
- Separate Kitchen
- Second Floor
- Gladstone Park Views
- Leasehold
- Chain Free

Oman Avenue,
London, NW2

Second Floor



Total area: approx. 40.4 sq. metres (435.3 sq. feet)